

THE WEAVER'S BAG



Mary Meigs Atwater
Weaver's Guild

December • 2023

What's happening

DECEMBER 14: Holiday Potluck and Gift Exchange, Mimi Rodes's home

JANUARY 13: Color in Weaving, by Deb Essen (Zoom meeting, 9:00 a.m. to noon)

FEBRUARY 8: James Koehler, Tapestry Weaver, by Rebecca Mezoff (Zoom meeting, 6:30 p.m.)

MARCH 7: TBA

MARCH 23: Paint Two, Beam One: Painting with Two Warps and Beaming Them as One, by Denise Kovnat (Zoom one-day workshop)

APRIL 11: The Power of Craft: A Weaver's Perspective, by Denise Kovnat

APRIL 11, 12, 13: Echo and Jin: Variations on a Theme, by Denise Kovnat (three-day in-person workshop)

MAY 9: Dye Day Preparation and Guild Challenge Reveal

JUNE: Saturday Dye Day and Potluck (date TBA)

All regular Guild meetings begin at 6:30 p.m. at the South Valley Unitarian Church, 6876 Highland Drive, unless otherwise indicated.

December Guild Meeting—Guild Christmas Party, Potluck Meal, and Gift Exchange

Thursday, December 14, 2023, 6:30 p.m.

Mimi Rodes's home

Our annual Guild Christmas party will be held on Thursday, December 14, at 6:30 at Mimi Rodes's home. We will meet for a potluck dinner, fiber gift exchange, and the chance to enjoy the spirit of the season with our friends. This evening is always a treasured experience for those who attend.

Please plan to bring a potluck dish for our dinner. Turkey and gravy and drinks will be provided, so please bring anything that will contribute to our holiday dinner. Please bring a serving utensil for your food.

Also please bring a wrapped fiber-related gift that can be exchanged with another Guild member. This can be anything that another fiber person will enjoy. Also bring your show and tell. It's always fun to spend a Christmas evening with each other!

Mimi Rodes will send out an email to the Guild list the week before the party asking for RSVPs. She will send her address to everyone who responds.

Sunny Cate, Vice President

President's Message

Welcome to December. It is a crazy, fun time of the year. Often panic ensues from the pressure to get everything done perfectly. I have the dream of making all my holiday gifts. Every party I go to deserves a handwoven gift towel, with a loaf of homemade bread, cookies, and a good bottle of wine. My big family all get handwoven scarves, and finally, my husband gets that new Norwegian sweater that I have been working on for years. When I dream, I dream big.

Deanna Baugh told me early in my weaving journey that there were two types of weavers—lace weavers and rug weavers. Lace weavers place the yarn and gently tap the weft in place. Rug weavers pound the fibers into place knowing that rugs must stand up to years of being walked on. I believe that there is a third type of weaver—the panicking holiday, I can get everything done weaver. Faster and faster the shuttle flies, as this will be the year everything gets finished. If you are going to dream, dream big!

Thank you to everyone who participated in our Guild sale. Many of you brought items in to sell, or helped with the set-up and take down, or best, spent money on the perfect handcrafted piece of beauty. It was a great success. I haven't looked at the numbers yet, but it felt like we had a huge number of towels, scarves, rugs, and handmade crafts. As the Guild sales have grown over the years, we remain grateful for the support.

The Guild sale reminded me of our Guild Challenge—color. As a weaver who likes structure and is happy putting 20 yards of natural cotton on the loom and making white-on-white huck lace towels, color is intimidating. Catherine Marchant wove some beautiful Bumberet towels in the Southwest color scheme that were fantastic! (The towels are the background art for this newsletter.) It is making me rethink my color Guild Challenge piece.

So many possibilities, so little time. Must weave faster.

Our Christmas party will be held at Mimi's house—soon to be known as the party house. The Guild will provide turkey, gravy, and drinks. Everything else is potluck. We will be having a small gift exchange at the end of the party. It is fun to see what people have made, bought, or found in their stash.

Looking forward to seeing everyone. Stay safe and enjoy the holidays.

Jeanette Tregagle, Co-President

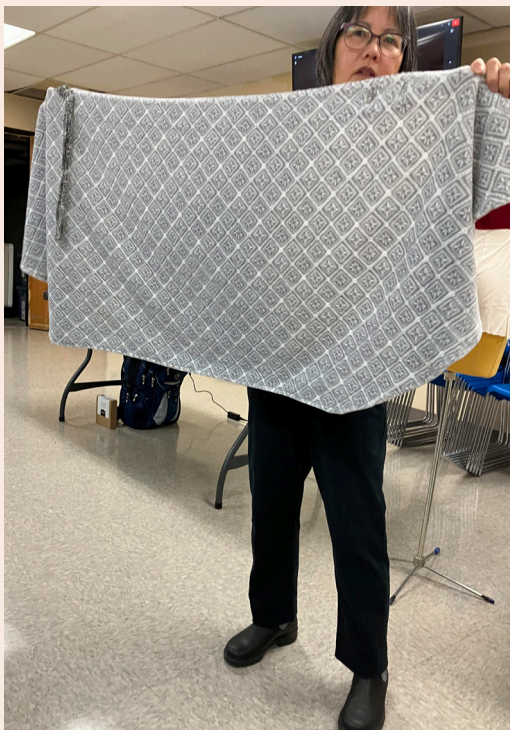


Towels at the Guild sale

October Guild Meeting

For our November meeting, Carolyn Chen gave a wonderful presentation on sewing and creating garments from handwoven cloth. She showed a number of clothing items she had made that could be made from handwoven cloth. She also explained and demonstrated various seams that would work well. We are so lucky to have a very talented seamstress as a member of our Guild.

—Beth Myrer, Recording Secretary



Update on the Recipe Book: Patterns for Handweavers

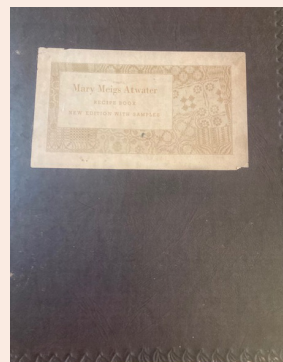
The *Mary Meigs Atwater Recipe Book: Patterns for Handweavers* is a collection of weaving drafts and information created by Mary Atwater and published after her death. Mary's daughter, Betty Biehl, gave the copyright for the book to our Guild. Our Guild now makes the book available on USB drives, along with photos of samples made by our Guild members from the drafts in the book. The book can be ordered on the Guild website.

The Guild also makes available on USB drives all of the Shuttle-Craft Bulletins written by Mary Atwater. All of these bulletins are on our Guild website.

For your information, since September 2021, our Guild has sent out 110 USB drives to people from around the country. Most contained the *Recipe Book*, but some contained the bulletin collection, and some contained both the *Recipe Book* and the bulletins.

We are grateful to Nancy Crowley, our Guild webmaster, for responding to all of these requests and sending out the USB drives.

For your information, the *Recipe Book* has recently been reprinted by the Eugene Textile Center, with permission from our Guild, which still owns the copyright. This is a beautiful book, with lots of color photos of samples. Here is the link: <https://www.eugenetextilecenter.com/mma-recipe-book-new-edition>



Denise Kovnat Guild Events

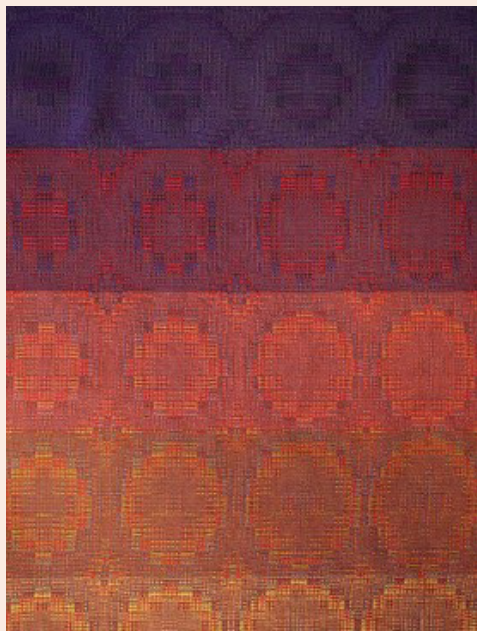
Denise Kovnat will be a guest teacher for our Guild next spring! She will present our April Guild meeting on April 11, titled "The Power of Craft: A Weaver's Perspective." She will also be offering two workshop options next spring:

On March 23, 2024, she will teach a one-day workshop: "Paint Two, Beam One: Painting Two Warps and Beaming Them as One," via Zoom.

On April 11, 12, and 13, she will be in Salt Lake City to teach a workshop: "Echo and Jin: Variations on a Theme." This is a class for intermediate and advanced weavers.

These two classes fit together nicely, and Guild members are welcome to take either or both classes. Learn more about Denise and these workshops on her website, denisekovnat.com/p/classes.html.

Registration materials and pricing information will be available after the new year.



Guild Dues Are Due!

Many of our members have paid their dues for the 2023–2024 Guild year, but many still have not. If this is something you have been going to get around to doing, now is the time! Dues are a mere \$30 for the entire year, and they provide our wonderful Guild with a place to meet and the ability to bring in many interesting and inspiring speakers and guests. You can pay by check made out to MMAWG, or with PayPal through the Guild's website link. Thank you so much for your support!

—Barbara Allen, Membership Secretary

Meetings of the Guild's Southern Utah Branch

MONDAY, DECEMBER 11, 2023, 1:00 pm to 3:00 pm
Holiday party, brunch, and gift exchange at Ivy DeHart's home

WEDNESDAY, JANUARY 3, 2024, 6:00 pm
Zoom Class with Robyn Spady (sign up at intermountainweavers.org)

MONDAY, FEBRUARY 12, 2024, 1:00 pm to 3:00 pm
Clasped warp and weft color weaving, taught by Dona Fisher, at the St. George Library

MONDAY, MARCH 11, 2024, 1:00 pm to 3:00 pm
Stash busting exchange. Location TBD

MONDAY, 8 APRIL 2024, 1:00 pm to 3:00 pm
Card and kumihimo braiding, taught by Isabell Lee, at the St. George Library

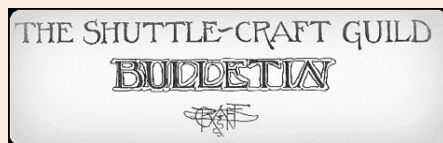
MONDAY, MAY 13, 2024, 1:00 pm to 3:00 pm
TBD at the St. George Library

The Shuttle-Craft Bulletin Study Group

The meeting schedule for the Shuttle-Craft Bulletin Study group is presented below. The next meeting will be held on December 11 at 7:00 p.m. at Phyllis Mandel's home. The topic of discussion will be Clothing Fabric, from the July 1930 and August 1939 bulletins. The December meeting includes an ornament exchange. If you want to know more about it, email Maureen Wilson (maureenmwilson@yahoo.com).

The study group meets to discuss Mary Atwater's work from the Shuttle-Craft Bulletins. This is an informal group, and if you have not participated, try a meeting. The meetings often begin with a reading from Mary Meigs Atwater's biography.

Date	Topic	Bulletins
December 2023	Fabrics for Clothing	July 1930; August 1939
February 2024	Crackle Weave Patterns; Knots for Tie-ups	August 1930; October 1930
April 2024	Pick-up; Monks Belt and Sugarloaf Patterns	September 1930; November 1938
June 2024	Krokbragd	November 1930; November 1937
August 2024	Linen Weaving	December 1930; March 1932



2023–2024 MMAWG Board

President: Mimi Rodes (801-619-6888, mimirodes@comcast.net);
Jeanette Tregeagle (801-568-9645, knitweave@yahoo.com)

Vice President: Sunny Cate (801-589-3393, sunny.cate@aquacate.com)

Membership Secretary: Barbara Allen (801-618-7397, barbaraallenster@gmail.com)

Recording Secretary: Beth Myrer (801-602-8612, betsyboo100@hotmail.com)

Treasurer: Margaret Hopkin, (801-624-8060, gmasfge@msn.com)

Librarian and Equipment Coordinator:
Susan Hainsworth (801-860-6483, susanhainsworth@gmail.com)

Hospitality: Karen Gregory (801-916-9849, klgregory12@gmail.com)

Grants Officer: Mimi Rodes (801-619-6888, grants@mmawg.org)

Newsletter: Susan Hainsworth (801-860-6483, susanhainsworth@gmail.com);
Maureen Wilson (801-485-5241, maureenwilson@yahoo.com);
Nicole Lohman (715-491-1893, nicolelohman@gmail.com)

Webmaster: Nancy Crowley (505-480-8079, ludmillalilly@outlook.com)

IWC Representative: Nancy Crowley (505-480-8079, ludmillalilly@outlook.com)

Shuttle-Craft Guild Study Group Coordinator: Maureen Wilson

Guild Challenge Coordinator: Beth Myrer

Guild Sale Coordinator: Catherine Marchant (801-216-4722, fibernbeads@gmail.com)

Outreach Coordinator: Julie Guiney (435-640-2965, jamg57@msn.com)

Mary Meigs Atwater Weaver's Guild of Utah

To join the Guild, send \$30.00 (\$35.00 to receive the newsletter by mail) to Barbara Allen, 524 North 100 East, Centerville, UT 84014, or go to the Guild website, where you can join using Paypal.

To join the Guild e-mail list, contact Susan Hainsworth, susanhainsworth@gmail.com.

Guild website: mmawg.org

The Weaver's Bag, December 2023
Vol. 71 No. 10



Guild Challenge

We introduced this year's Guild Challenge at our October meeting, and we are so excited about it! It's all about COLOR!

To participate in the challenge, create a project (or two or more!) that challenges you to create with color. You may interpret this challenge however you want. It is fully self-directed. At our May Guild meeting, we will all share what we have done.

To help us with this challenge, several of our Guild meetings will be focused in some way on color and weaving. Please join us in this challenge, and get ready to have fun! We can't wait to see what you create!

—Sunny Cate and Beth Myrer

Ivy DeHart, *Shades of Night*

Shuttle-Craft Bulletins: Inkle and Belt Weaving

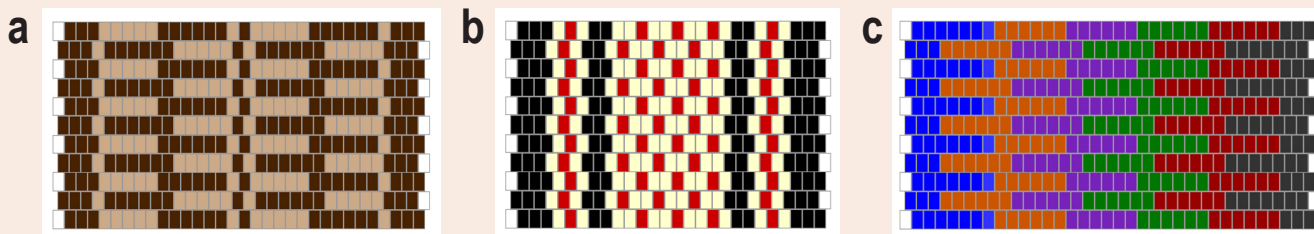
The Shuttle-Craft Bulletins covered in this article are from December 1937 and April 1938. These Bulletins are on the Guild website (mmawg.org) under the Bulletins Tab.

Mary Meigs Atwater designated the December Bulletin issue as the equipment and supply issue. In December 1937, she wrote on inkle looms and weaving. She defined the word “inkle” as an old English word for a narrow band. Here are a few of her woven examples of Mexican and Peruvian inkle designs that are in the Guild collection.

A sketch of Mary’s inkle loom was included in the Bulletin—a floor model with movable pegs. Mary wrote that one could build it from the sketch very easily, or one could acquire one from Gilmore for a price of \$5.

Mary included illustrations of the loom warped and how to form the sheds for plain weave. She also mentioned that card weaving may be done on an inkle loom.

Five drafts for inkle bands were provided—three in plain weave and two in pickup pattern. I’ve drafted up the plain weave patterns using the Inkle Loom Pattern Generator site, <https://carolingianrealm.blog/PatternGenerator.php>. These patterns are shown in the image below: (a) and (b) are Indian patterns, and (c) is a band in many colors.



Mary wrote that pattern (a) was from a piece of Navajo weaving done in wool warp with a coarse cotton weft. Pattern (b) was a narrow belt, also Navajo in origin, in three colors. Pattern (c) was done after a Swedish sample made in perle cotton, giving an attractive pattern when done in bright colors.

Inkle weaving is not limited to just plain weave. The other two drafts described in the bulletin show patterns done in pickup. Pattern (d) is a Navajo or Guatemalan design, and pattern (e) is a Scandinavian design. Mary described two pickup methods and recommended that the weft not be drawn as tight as in plain weave and to use a coarser weft when weaving pickup.

Mary published a 12-page monograph on inkle weaving in 1941, available through Handweaving.net or the University of Arizona sites. This publication has many more drafts and lovely illustrations. It is worth looking into for further information.

In April 1938, Mary wrote about how belts and what she called girdles were becoming very popular. She described them as done in many colors and finished with a large wood or metal buckle or with a long fringe. She thought that a warp-faced weave would be best for weaving belts, although she wrote that many weave structures could be used, such as double weave, weft-faced weaves, or even lace weaves, like Spanish lace.

She recommended card weaving, as it would provide a firm fabric that would be strong lengthwise and able to provide elaborate patterns. Another weave she thought would be appropriate was the Swedish matta or rep weave.

She also liked braiding for belts and provided instructions for the four-strand version that she preferred, including a color combination. She provided several drafts with tie-up and treadling. An interesting one was based on a Philippine costume. Mary provided two drafts for this, four and eight shaft. It would have been woven with thick, multistrand cotton in green, red, and navy blue. Mary recommended weaving a bag to complement it, as well as the other designs. Other drafts were for a warp-faced belt and a card-woven one.

I’ve included a drawdown for the warp-face weave, draft (c), here. The figure provides an idea of what a belt done in this weave might look like.

Finishing instructions for either fringe or belt buckles were included. Mary recommended either braiding the fringe or making your own belt buckle. She was experimenting with a buckle cut out of sole leather. She thought that commercial buckles detracted from the woven belt.

In terms of materials used to weave these belts, Mary recommended woolen or worsted yarns, linens, cotton, or silk. The fabric should be woven with a firm beat and could be interlined if needed. The belts could also be bound with leather at the ends.

—Maureen Wilson, Shuttle-Craft Bulletin Study Group Coordinator

