

# THE WEAVER'S BAG



Mary Meigs Atwater  
Weaver's Guild

November • 2023

## What's happening

**NOVEMBER 9:** Sewing with Rectangles and Handwovens, by Carolyn Chen

**NOVEMBER 17–18:** Guild Holiday sale

**DECEMBER 14:** Holiday Potluck and Gift Exchange, Mimi Rodes's home

**January 13:** Color in Weaving, by Deb Essen (Zoom meeting, 9:00 a.m. to noon)

**FEBRUARY 8:** James Koehler, Tapestry Weaver, by Rebecca Mezoff (Zoom meeting, 6:30 p.m.)

**MARCH 7:** TBA

**MARCH 23:** Paint Two, Beam One: Painting with Two Warps and Beaming Them as One, by Denise Kovnat (Zoom one-day workshop)

**APRIL 11:** The Power of Craft: A Weaver's Perspective, by Denise Kovnat

**APRIL 11, 12, 13:** Echo and Jin: Variations on a Theme, by Denise Kovnat (three-day in-person workshop)

**MAY 9:** Dye Day Preparation and Guild Challenge Reveal

**JUNE:** Saturday Dye Day and Potluck (date TBA)

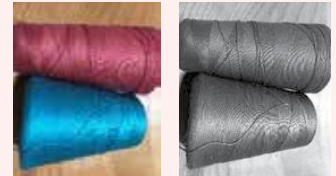
All regular Guild meetings begin at 6:30 p.m. at the South Valley Unitarian Church, 6876 Highland Drive, unless otherwise indicated.

## President's Message

This fall is just zipping by! Talk about COLOR!!!! The fall colors have been GORGEOUS this year! The leaves make such an inspirational color palette of reds, browns, golds, and green!! Nature at her best!

I'd like to thank Beth Myrer for leading this year's challenge and Sunny Cate for kicking off the conversation with a presentation on the "basics" of color!!! Having just participated in Rebecca Winter's Shadow Weave workshop, my brain was really focused on the importance of value contrast in shadow weave.

Since the workshop was round robin, we all had the opportunity to see how different color combinations and values worked together and be reminded of the wonderful tool our phone cameras are to evaluate contrast. I have been eyeing two beautiful cones of thread that I thought I would use to weave some shadow weave dishtowels. So, after the workshop I pulled out my phone, set the camera on black and white, and as you can see, found that there would just not be enough value contrast between the two yarns to show off the shadow weave design. Darn!!!



It was such a fun and interesting workshop. Rebecca is a wonderful teacher, and it was so lovely to be with friends and work together!

Happy Fall and Happy Weaving!!!

Mimi Rodes, Co-President

## Here are some examples of the weaving done in the workshop:



Turquoise and gold brown are my favorite colors, but their values are so close that they blur together



Dark purple and hot pink. The pattern shows, but the colors still are blending some.



Julie's dark blue and white had the greatest contrast and showed the pattern best!

## November Guild Meeting—Sewing with Rectangles and Handwovens

Thursday, November 9, 2023, 6:30 p.m.

South Valley Unitarian Church,  
6876 Highland Drive, basement

We are excited to have our own Carolyn Chen to present at our November meeting. She will be showing us techniques for sewing with handwovens, and she will discuss how she uses rectangles to create garments. She will also share techniques for how to fit garments sewn with handwovens. Her work is beautiful and inspiring, from her wearables to her handbags.

Carolyn is a multicrafter—knitting, sewing, crocheting, and weaving. She is a member of our Guild, the treasurer of the Salt Lake Knitting Guild, the chairwoman of the board of directors for the American Sewing Guild (ASG), and a member of the Salt Lake City ASG. With all of these interests, she was motivated to find a way to combine her crafts, and that led her to sewing with handwovens and with simple shapes. She has studied with Susan Lazear, who teaches classes on using Asian clothing (which is often rectangular) and designs clothing, especially wearable art.

We will start the meeting with Show and Tell at 6:30, so please bring items you have been working on. We hope to see you there!

Sunny Cate, Vice President

## October Guild Meeting

The Guild program for October was the introduction of the Guild Challenge—COLOR! This challenge can be using a subtle contrast of shade or a much more visible one. It can be using a different palette of color than you usually gravitate to. So the challenge is to make a decision about what a color challenge means to you.

Sunny Cate gave a wonderful presentation on color—how it is defined, a look at the color wheel, and the definition of the terms used in discussion of color. We then did color wrappings using thrums and ends of cones or samples that people brought for that purpose. I hope everyone enjoyed it and will embrace the challenge.

—Beth Myrer, Recording Secretary



## Guild Challenge

We introduced this year's Guild Challenge at our October meeting, and we are so excited about it! It's all about COLOR!



To participate in the challenge, create a project (or two or more!) that challenges you to create with color. You may interpret this challenge however you want. It is fully self-directed. At our May Guild meeting, we will all share what we have done.

—Sunny Cate and Beth Myrer



## Denise Kovnat Guild Events

Denise Kovnat will be a guest teacher for our Guild next spring! She will present our April Guild meeting on April 11, titled "The Power of Craft: A Weaver's Perspective." She will also be offering two workshop options next spring:

On March 23, 2024, she will teach a one-day workshop: "Paint Two, Beam One: Painting Two Warps and Beaming Them as One," via Zoom.

On April 11, 12, and 13, she will be in Salt Lake City



to teach a workshop: "Echo and Jin: Variations on a Theme." This is a class for intermediate and advanced weavers.

These two classes fit together nicely, and Guild members are welcome to take either or both classes. Learn more about Denise and these workshops on her website, [denisekovnat.com/p/classes.html](http://denisekovnat.com/p/classes.html).

Registration materials and pricing information will be available after the new year.



## Guild Holiday Sale, November 17–18

The Guild Holiday Sale will be held on November 17 and 18 (Friday evening and Saturday) at the South Valley Unitarian Church, where regular Guild meetings are held—6876 South Highland Drive. Holiday items, apparel, household goods—anything that you make (except food) can be sold.

Ann McKane is in charge of volunteers for the sale. Please contact her to let her know when you can help: [mckaneann@gmail.com](mailto:mckaneann@gmail.com), 206-371-4722.

Here is the schedule:

### FRIDAY

**12:00 noon to 2:00 p.m.** Set up tables, walls, etc. We will be setting up first before any inventory can be displayed. Please leave your sale items outside until we are all set up.

**2:00 to 5:00 p.m.** Check in and arrange sale items

**5:00 to 8:00 p.m.** Sale

### SATURDAY

**10:00 a.m. to 5:00 p.m.** Sale

**5:00 to 7:00 p.m.** Check out and take down  
—Catherine Marchant, Guild Sale Coordinator



Gnome by Anne McKane and scarf by Catherine Marchant from previous Guild Holiday sales.

## Guild Dues Are Due!

Welcome back for another year of great Guild meetings! There is always so much to learn and share with each other. We will be collecting dues for the upcoming 2023/24 season so we can provide interesting and inspiring meetings and presenters (as always). Dues are a mere \$30 for the year, payable by cash, check made out to MMAWG, or through the Paypal link on the Guild website.

—Barbara Allen, Membership Secretary

## Meet Julie Guiney!

Our November featured Guild member is Julie Guiney. Julie lives in Park City, where she works at Deer Valley. When not weaving, Julie enjoys hiking, skiing, and spending time with her dog and boyfriend. Julie joined the Guild during the pandemic after the closure of the Pioneer Craft House.

Fabrics, textiles, and color intrigued Julie from an early age. In college she noticed that weaving classes were offered to art students, which piqued her interest. It wasn't until 2017 that she was able to act on that interest. A writing class reinvigorated her interest in the craft and Julie decided to act on that interest, which led her to the Pioneer Craft House. There she took numerous weaving classes and fell in love with the craft and its community.

Julie has assembled a small weaving studio in her home. There she has four looms of various types, which allow her to work on a variety of projects. Many of our members



Julie and her dog Gypsy Wind.

may know of Julie by way of her ski-sock rugs, which she started making when she was involved with the Pioneer Craft House. She's currently woven 13 of these rugs, which translates to a lot of recycled socks!

Julie works hard to try to upcycle and recycle equipment and materials by purchasing second-hand equipment, yarns, threads, and rags. She's made a lot of her rugs through donations of old jeans and ski socks. I recall there was a collection at the Pioneer Craft House for those of us who wished to donate our old wool socks! She also has had great success with obtaining materials from Pendleton, thrift stores, and retired weaver sales.

Through the Guild and her own initiative, Julie has been able to participate in a number of additional classes to expand her skills. She participated in the Parallel Threading workshop offered by the Guild in 2021 during the pandemic, which inspired a year of experiments with treading patterns and different colorways. She was also able to attend a rug workshop with Tom Knisley and a Double Weave Rainbow workshop at the Intermountain Weaver's Conference, which could lead to a number of new double weave projects.

Julie always seems to have a project on one of her looms! She's currently working on baby blankets and a double weave project. Her favorite projects she has completed are rugs in Rep weave and hand towels in basket weave stripe.

Julie regularly attends our Guild meetings and the Shuttle-Craft Bulletin study groups. Keep her in mind when you are gearing up for ski season and find your old socks are worn out. She will be happy to take them off your hands!

—Nicole Lohman



Julie at her standing walking loom.

## 2023–2024 MMAWG Board

**President:** Mimi Rodes (801-619-6888, mimiodes@comcast.net); Jeanette Tregagle (801-568-9645, knitweave@yahoo.com)

**Vice President:** Sunny Cate (801-589-3393, sunny.cate@aquacate.com)

**Membership Secretary:** Barbara Allen (801-618-7397, barbaraallenster@gmail.com)

**Recording Secretary:** Beth Myrer (801-602-8612, betsyboo100@hotmail.com)

**Treasurer:** Margaret Hopkin, (801-624-8060, gmasfgel@msn.com)

**Librarian and Equipment Coordinator:** Susan Hainsworth (801-860-6483, susanhainsworth@gmail.com)

**Hospitality:** Karen Gregory (801-916-9849, klgregory12@gmail.com)

**Grants Officer:** Mimi Rodes (801-619-6888, grants@mawg.org)

**Newsletter:** Susan Hainsworth (801-860-6483, susanhainsworth@gmail.com); Maureen Wilson (801-485-5241, maureenwilson@yahoo.com); Nicole Lohman (715-491-1893, nicolelohman@gmail.com)

**Webmaster:** Nancy Crowley (505-480-8079, ludmillalilly@outlook.com)

**IWC Representative:** Nancy Crowley (505-480-8079, ludmillalilly@outlook.com)

**Shuttle-Craft Guild Study Group Coordinator:** Maureen Wilson

**Guild Challenge Coordinator:** Beth Myrer

**Guild Sale Coordinator:** Catherine Marchant (801-216-4722, fibernbeads@gmail.com)

**Outreach Coordinator:** Julie Guiney (435-640-2965, jamg57@msn.com)

## Mary Meigs Atwater Weaver's Guild of Utah

To join the Guild, send \$30.00 (\$35.00 to receive the newsletter by mail) to Barbara Allen, 524 North 100 East, Centerville, UT 84014, or go to the Guild website, where you can join using Paypal.

To join the Guild e-mail list, contact Susan Hainsworth, susanhainsworth@gmail.com.

Guild website: mmawg.org

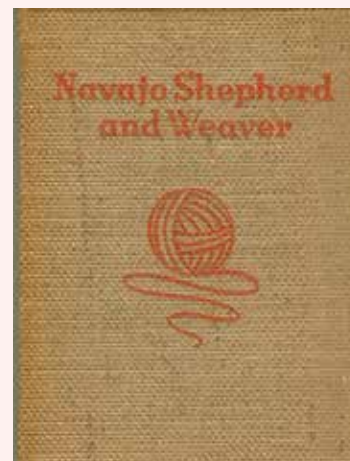
The Weaver's Bag, November 2023  
Vol. 71 No. 9

## Shuttle-Craft Bulletins: Rugs, Weft-Faced and Warp-Faced

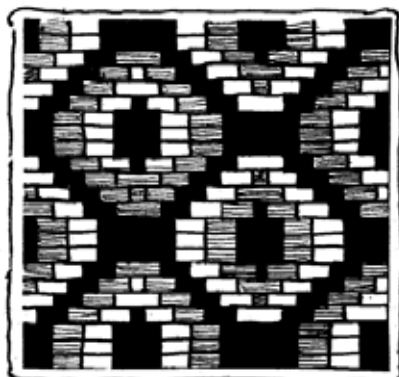
The Shuttle-Craft Bulletin covered in this article is from September 1937. This Bulletin is on the Guild website ([mmawg.org](http://mmawg.org)) under the Bulletins tab.

Mary Meigs Atwater wrote in the September 1937 Shuttle-Craft Bulletin about weaving Navajo Rugs, based on the book sent to her by a Guild member: *Navajo Shepherd and Weaver*, by Gladys Reichard, first published in 1936. This book is still available. It is based on what Mary called saddle blanket weaves, which may be done on a 4-shaft loom, rather than what we know as a Navajo loom, which uses tapestry techniques. The weave is weft faced, where the weft completely covers the warp.

Mary wrote that for this weave, a large treadle loom with a heavy beater was desirable. She recommended a strong, heavy warp, of rough linen or hard-spun wool. She noted that this type of rug requires a large quantity of weft yarn, estimating that a 28" x 40" rug would require 2 pounds of wool weft. She showed 2 designs, one based on a twill layout and the other on a diamond figure shown below.



Diamond



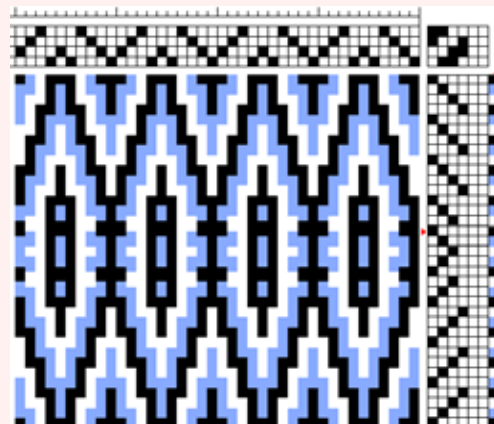
Mary wrote that the patterns in the weaving had meaning to the Navajo, stating that "there is a sacredness about symbols, and in my opinion they should not be used carelessly, merely as a decoration, and I cannot feel that anyone not a Navajo should wish to imitate these tribal symbols." She also wrote that "the weaves are ancient, . . . but all weaving is ancient. . . . It is by using the ancient weaves in new ways to serve changed conditions of life that the art lives and is renewed."

Mary included four drafts based on the plates of the Reichard book. She described in detail the treadling for these drafts to match the rugs shown in the book. These drafts are repeated in the *Recipe Book*, Series II, No. 6, Recipe for Rugs in Indian Saddle-Blanket Weave. The drawdown for draft (b) is shown here.

Mary thought that one of the beauties of Navajo weaving is the firm edge, made by

two twisted cords along the selvages. She wrote that the weavers twisted the cord as they wove, but she found this process to be slow and trying. She suggested using card-weaving, with one card on each side, warped with four ends of a fine cord, sleyed all in one dent, with the cards hanging free. She wrote that a very pretty edge resulted from giving both cards a quarter turn after three or six shots of weft, depending on the weight of the cord.

Mary also described methods for finishing the ends of the piece when woven on a shaft loom. One was to weave a narrow heading as done for most rug weaving, turn under a hem, and finish it with cross-stitching in coarse material to simulate a twined edge. Another way, which Mary considered the best option, was to use what she called a Philippine edge, described in Peter Collingwood's book, *The Techniques of Rug Weaving* (page 483). The third way was to twine two cords at the top and bottom and then weave the cut warp ends back into the rug weft.



There are many resources available on Navajo weaving techniques. The Guild library has several books on the topic.

If you are interested in the history of Navajo rugs, see this website; <https://www.navajorugrepair.com/navajorug.htm>

The Adopt-a-Native Elder program has an annual sale of woven rugs in November to support the Native Elder weavers; see more about that at this link: <https://www.anelder.org/Navajo-Rugs-and-Jewelry>. You can see fine examples done in traditional colors, natural colors, handspun yarns, and more.

—Maureen Wilson, Shuttle-Craft Bulletin Study Group Coordinator

## The Shuttle-Craft Bulletin Study Group

The 2023–2024 meeting schedule for the Shuttle-Craft Bulletin Study group is presented below. The next meeting will be held in December, date and time to be announced. The topic of discussion will be Fabrics for Clothing, from the July 1930 and August 1939 bulletins. The December meeting includes an ornament exchange. If you want to know more about it, email Maureen Wilson ([maureenmwilson@yahoo.com](mailto:maureenmwilson@yahoo.com)).

The study group meets to discuss Mary Atwater's work from the Shuttle-Craft Bulletins. This is an informal group, and if you have not participated, try a meeting. The meetings often begin with a reading from Mary Meigs Atwater's biography.

Date	Topic	Bulletins
December 2023	Fabrics for Clothing	July 1930; August 1939
February 2024	Crackle Weave Patterns; Knots for Tie-ups	August 1930; October 1930
April 2024	Pick-up; Monks Belt and Sugarloaf Patterns	September 1930; November 1938
June 2024	Krokbragd	November 1930; November 1937
August 2024	Linen Weaving	December 1930; March 1932

