

The Weaver's Bag

Mary Meigs Atwater Weaver's Guild of Utah • December 2014 • Vol. 60 No. 4

December Guild Meeting

What: Guild Christmas Party and Fiber Gift Exchange

When: Thursday, November 18, 2014, 6:30 pm

Where: Mimi Rodes's home, 9 Courtside Lane, Sandy, Utah

Our December Guild meeting is our Annual Christmas Party with a potluck dinner. The turkey, stuffing, and potatoes and gravy will be provided, along with drinks. Please bring a dish to accompany these delicious foods, and don't miss this culinary event!

And we will have our annual fiber gift exchange. Bring a wrapped gift that can be exchanged with another Guild member. Gifts can be anything that a fiber fanatic might enjoy. Gifts can be simple—the most important thing is to come and share in the fun!

We are most grateful that Mimi offers her beautiful home for this event, helping to make our Christmas party a magical evening. Please call Mimi if you have any trouble finding the home: 801-619-6888.

Driving Directions from I-15: Exit Interstate 15 at 106th (10600) South and turn left (east) on 106th South. Stay on 106th South until it ends at a "T" stop sign, which is 2000 East. Turn right at 2000 East, and then at the first street (Pepperwood Drive), turn left and drive up the hill.

At the entrance gate, stay left and say that you are a guest of Lee Walker. Proceed 7 tenths of a mile on Pepperwood Drive. The street will go down a hill, then curve left while going up a hill. At the top of the hill, you will see tennis courts and swimming pool complex on your right. Turn left on Wanderwood, then make an immediate left on Courtside. Mimi's home, 9 Courtside, is the first home on your left. Note: The other end of Wanderwood is 2 to 3 blocks from the guard gate. Don't turn left off Pepperwood Drive until you have driven 7 tenths of a mile.

From East Bench Areas: Proceed south on Wasatch Blvd. After crossing South Little Cottonwood Road, continue for 2 miles on Wasatch Blvd. Turn right on Pepperwood Drive and drive up the hill. Then follow the directions in the second paragraph above.

-- Jeanette Tregeagle &



President's Message

Wow, 2014 just whizzed by!! It was a busy year last year, with the Fiber Festival and Rebecca Winter and Bonnie Tarses workshops and excellent meeting presenters. Thank you for the efforts of all involved in bringing this group these opportunities to learn and grow as fiber artists. Lucky for us we have more fun and educational events planned in 2015! We will be ringing in the New Year with our Guild show, featuring works inspired by international textiles, which runs from January 15 to March 4, 2015. I hope that everyone is busy finishing up their projects to hang in the show. Joanne Hall will be teaching her Swedish Art Weaves workshop at the end of January. So much to look forward to!

Happy Holidays everyone! Happy New Year!

Sonya Campana &

Summary of November Guild Meeting-- Shadow Weave

For the Guild's November meeting, held on November 13, 2014, we talked about Shadow Weave and the great possibilities that are out there for patterns. Several members brought "show and tell" projects in shadow weave to add to the program. I have enjoyed exploring this technique and sharing it with the Guild. We looked at several ways that we can make shadow weave drafts and also how to read the patterns in Marion Powell's important book titled 1000+ Patterns in 4, 6, and 8 Harness Shadow Weaves. It would be fun to see more shadow weave come in to future meetings as show and tell. It is a great structure for four, six, or eight shaft projects.

-- Deanna Baugh &

New Guild Study Group

The Guild is forming a new study group. As you know, for the last year, Maureen Wilson has been submitting reviews of Mary Atwater's Shuttle-Craft Bulletin in numeric order, starting with the very first. We propose that we form a group of Guild members who are interested in studying Mary Atwater and her Shuttle-Craft Bulletins. There has been much interest expressed by Guild members in this study group.

We propose that we begin meeting in February 2015. We will post a date in the January newsletter. We are excited to start up something new for our Guild! We are open to ideas from the group as to how we will proceed in our studies. There are definitely the bulletins to review, and there is the possibility to incorporate weaving for those interested. We can warp a loom and weave samples of the weaving described in the Shuttle-Craft Bulletins.

A sample can be put into a binder for our archive. This can also be like a book group, where we read the bulletins and discuss what we learned. In this way Mary can be amongst us again, and we can learn from her. We find anytime we get together with my weaving friends, our brains light up with inspiration, and that is a good thing.

We want to keep the premise simple and the goal of learning about weaving above all. Enjoy the holidays, and keep weaving for the upcoming show in January!!

-- Sonya Campana and Maureen Wilson &

Fiber Arts Roundup

TNNA WINTER TRADE SHOW

The National Needlearts Association

January 10-12, 2015, Phoenix Convention Center,
Phoenix AZ;

www.tnna.org

INTERWEAVE YARN FEST

April 16 to April 19, 2015

Embassy Suites Loveland—Hotel, Spa & Conference
Center

4705 Clydesdale Pkwy

Loveland, CO

<http://www.interweaveyarnfest.com/>

INTERMOUNTAIN WEAVER'S

CONFERENCE - Try Something New

July 23-26, 2015,

Fort Lewis College, Durango, CO

Registration begins February 1, 2015 for IWC
members

www.intermountainweavers.org

-- Jill Dable &

(To contribute to the "Fiber Arts Roundup,"
send information to Jill Dahle at
pjdahle@msn.com.)

**Swedish Art Weaves Workshop
With Joanne Hall
January 22–24, 2015
Utah Cultural Celebration Center**

Registration for this workshop closes on Thursday, December 18, the day of the Guild Christmas party. Joanne needs time to wind our warps and get them to us. The warps will be sent or delivered to you by the first of the year so that you will have three weeks to wind your warp. There are only 112 warp ends, so you should be fine. There are still open spots in the workshop.

From Joanne Hall:

“I am looking forward to the workshop. I have had fun teaching the Swedish Art Weaves workshop and I am sure that everyone will learn something that they will want to use.

I will wind the warps and send them in advance of the workshop. I will supply the warp and weft materials and there will be a supply fee of \$28 for each participant. I will send all the materials in advance by FedEx, and the shipping cost is included in the \$28. I will send a list of items to bring such as 3 or 4 flat (stick) shuttles, scissors, tape measure, a few pages graph paper, and pencil. The stick shuttles actually work very well for this weave compared to boat shuttles. I can supply stick shuttles if anyone needs to purchase them. They are \$9.00 each.

There are 112 warp ends, 10 ends per inch, 11.2 inches wide, so a narrow loom can be used. However, since the warp is linen, the loom should have a weaving depth from breast beam to back beam of at least 25 inches, and a little more is helpful to get a good result. You need at least four shafts.

A 10-dent reed is necessary and if someone wants to order one, we can send one. We just need to know the height, 4 inches (which is tall enough) or 4 3/4 inches (for those looms that only take one size) and the maximum length to fit into the reed.

I will warp a loom during the class. I like to do this as there are usually many questions about warping. I can use this loom for demonstrating throughout the three days and I can weave on it. Sometimes there are advantages to making it possible for the participants to watch me weaving.”

Joanne’s fiber biography:

- Master’s in Textile Design, University of Minnesota
- Assistant Professor, University of Montana, and Cal Poly, CA.
- Chair of HGA’s Certificates of Excellence in Handweaving, 1979–1983
- Instructor of drawloom weaving, tapestry weaving, Swedish weaves, Swedish art weaves, Swedish rag rug weaving, 4 shaft pattern weaves (for example, overshot), band weaving, rigid heddle weaving, warping the loom and beginning weaving.
- I have over 40 years’ experience teaching weaving classes for guilds, art centers, weaving shops, folk schools, universities and in my studio.
- The most recent classes I have taught were at Convergence 2014.

Registration for Swedish Art Weaves Workshop

Swedish Art Weaves Workshop

With Joanne Hall

January 22–24, 2015

Utah Cultural Celebration Center

Registration begins on November 13 and closes on December 18. The cost will be about \$125 for three days depending on how many people register. Joanne can take up to 20 people. A deposit of \$50 is required with the registration, and the remainder is due at the time of the workshop.

The linen warp will be wound and sent by Joanne Hall, with a \$28 materials fee payable to Joanne at the workshop.

Please send this form and a check made out for \$50 to Beth Myrer, 1407 West 1100 North, Provo, UT 84604. You can call Beth with questions: 1-801-602-8612.

Name: _____

Email: _____

Telephone: _____

Address: _____

Table or floor loom and number of shafts: _____

The Swedish Art Weaves Workshop

Halvkrabba and Krabba

The spring 2013 issue of VAV magazine features the art weaves of Sweden. Along with stories and projects, there are instructions for weaving the most popular art weaves. This sampler is woven as described in VAV magazine, 2/2013 p50.

Beginners will be able to weave the half krabba and the krabba weaves and they can be woven on any four shaft loom. They are easy to weave, laid-in techniques. Tapestry can also be woven on any loom. More experienced weavers may be able to weave more than these three parts of the sampler.



Halvkrabba



Krabba



Tapestry

Looms will be warped prior to the workshop.
Four shafts, threaded 1,2,3,4.
Four sheds are required, plain weave and 1&2 and 3&4.
10 dent reed, 10 ends per inch,
Weaving width is 11 inches, Warp ends 112.
10 dent reeds and other supplies can be ordered prior to the workshop.

Supplies to bring: scissors, tape measure, a few pages graph paper, pencil, 3 or 4 stick shuttles

Supplies provided at the workshop and available for purchase:
VAV magazine 2/13, Slender boat shuttles, Temples, additional warp and weft



Swedish Warp and Weft materials

Warps using Swedish 16/3 linen will be pre-wound and sent prior to the workshop.
Weft, Faro single ply Swedish wool, will be supplied at the workshop.

Joanne Hall
joanne@glimakrausa.com
www.glimakrausa.com
406 442 0354



At VÄV the Swedish conference 2014



The colorful Hemslöjd booth representing Skåna in southern Sweden

Gunvor Johansson and me,
holding a copy of her book,
VÄV Skånska Allmogevävnader



And here is the bag
featured in the VÄV
magazine article for
learning to weave the
Swedish Art Weaves

The back of a bag, with
pick and pick stripes and a
tapestry bird



A bag woven with halv
krabba patterns

Hello 1970: The 2014 Interior Design Trend—Woven Wall Hangings

How many of you have noticed this surprising design trend: handwoven off-loom wallhangings are all over in the design world! Appearing in design magazines as well as design blogs, these look like they walked right out of the 1970s. When reading the stories that accompany the beautiful images, it quickly becomes apparent that there is a lot about confusion over weaving and macramé. Though both were popular in the 1970, weaving of course involves over/under intersections of fiber, whereas macramé is all about knots. You can see examples here:

<http://www.apartmenttherapy.com/roundup-beau>

<http://decor8blog.com/2013/10/28/microtrend-lets-talk-about-woven-wall-hangings/>

<http://www.designsponge.com/2014/03/20-woven-wall-hangings-to-inspire-buy-or-diy.html>iful-wall-hangings-211730

<http://decor8blog.com/2013/10/28/microtrend-lets-talk-about-woven-wall-hangings/>

This design trend appears to be whetting the appetite for creating, as the DIY blogs also are now featuring articles on off-loom weaving, for example:

<http://fallfordiy.com/blog/2014/05/06/diy-woven-wall-hanging/>

<http://www.gatheringbeauty.com/2014/07/diy-woven-wall-hanging.html>

<http://honestlywtf.com/diy/diy-woven-wall-hanging/>

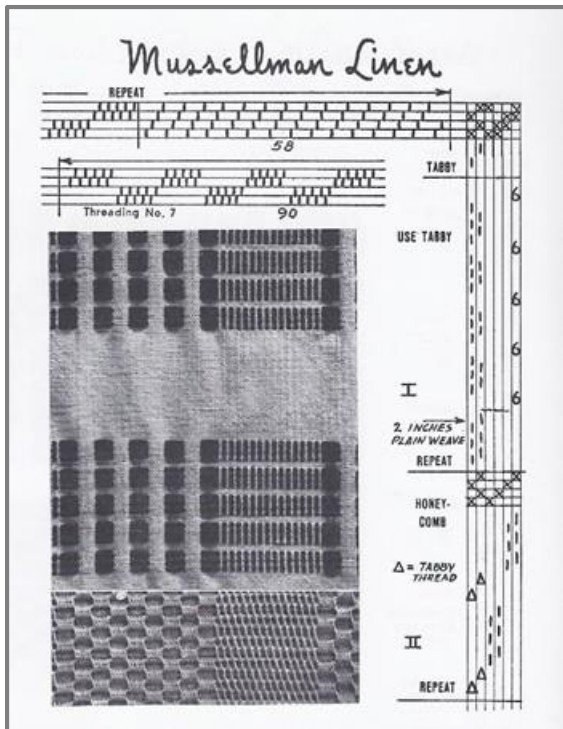
What I have not seen yet, though, is a link between the DIY wall hangings and weavers who use looms. Would tapping into this trend be a way for the Guild to attract new weavers, or be a useful sort of class or demonstration to offer for the public? Regardless, it will be interesting to see if it has already had its 15 minutes of fame, or if it is a trend that is here to stay.

Leslie Sieburth, Newsletter Features Editor



The Shuttlecraft Bulletin; Linen Weaves

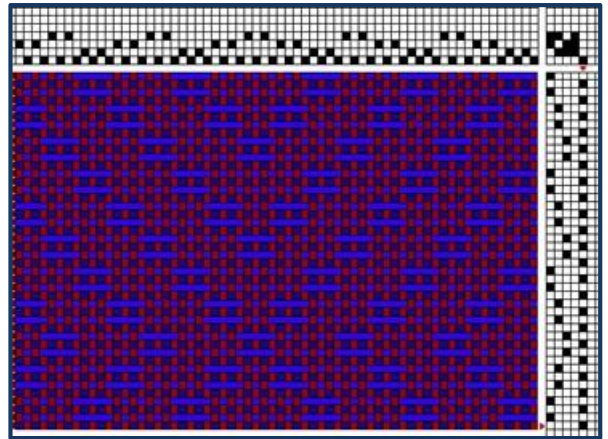
The Shuttlecraft Bulletins covered in this month's article are from February (#17) and May (#20) 1926. The weave structure discussed is linen weave. Mary Meigs Atwater has referred to "linen weaves" before and I wondered, what is a linen weave? Is it a weave appropriate for household linens, such as toweling? Woven in linen thread? Or both? The draft in the May issue is described as an ancient threading for linen weaving and over 200 years old. There is a very close approximation of it, including the honeycomb treadling in M. Davidson's *A Handweaver's Pattern Book* (see figure) known as the Musselman Linen (see P. 104), which is included in the section on Monk's Belt.



M. Davidson includes many drafts for what are called linen weaves in several sections of her book, including 1000 Flowers, which is most like overshot, Canvas Weaves, Texture Weaves, Rose Design, Ms and Os, Spot Bronsen and Monk's Belt. Online is a document for a linen weaves workshop that includes several different structures, all woven in linen, some very fine. Included is huck lace, like the piece that Jeanette showed us at last month's meeting. To see the document, use this link: <http://www.weavingindiana.org/PDFs/EleanorBest/LinenWeavesWorkshop.pdf>

In the February 1926 issue, Mary Meigs Atwater describes the pattern as good for upholstery material, woven in wool or linen or Egyptian cotton. She gives a color combination recommendation, and a setup for a runner or a

towel border. Section B of the pattern is a gooseye pattern in Spot Bronsen weave, done up in fine linen, recommended for upholstery. It is shown below:



Section C is woven in fine linen on a fine cotton warp, producing an openwork effect suitable for curtains.

In I. Emery's *The Primary Structures of Fabrics*, the use of the term "linen weave" is described as plain weave, thought to reflect the standard plain weave linen cloth from some particular period in some particular part of the world. Other structures considered to be linen weave is huckback or huck, frequently described as a weave appropriate for linen towels due to the added absorbency of the floats. "Linen weave" is also used to designate any weave associated with linen thread, although Emery states that the linen connotation has diminished with the increased use of cotton in toweling. So, in answer to my question, linen weave may be any of the above.

Pantone Color of the Year for 2015

Pantone, an X-Rite company and the global color authority, announced PANTONE® 18-1438 Marsala, a naturally robust and earthy wine red, as the Color of the Year for 2015. For more information, see the press release at www.pantone.com.



Mary Meigs Atwater
Weaver's Guild of Utah

December 2014 • Vol. 60 No. 4

Newsletter editors:

Susan Hainsworth, susanhainsworth@gmail.com; Maureen Wilson, maureenmwilson@yahoo.com

The newsletter is published 10 times a year. Any articles or information should be to the editor by the 5th of the month.

To join the Guild send \$30.00 (\$35.00 to receive the newsletter by mail) to Kira Masnica, 1042 Fort Union Blvd. #138, Midvale, UT 84047, kira.spins@gmail.com, 801-671-4496

To join the Guild e-mail list: MMAWG-subscribe@yahoogroups.com

Guild web page: www.mmawg.org

Guild meetings are generally held the 2nd Thursday of the month at the Unitarian Church 6876 South Highland Drive (2000 East)

2014–2015 MMAWG Board

President: Sonya Campana, 801-733-5888, sonyacampana@yahoo.com

Vice President: Jeanette Tregeagle, knitweave@yahoo.com, 801-568-9645

Secretary: Deanna Baugh, 801-966-3642, num1weaver@gmail.com

Treasurer: Kira Masnica, kira.spins@gmail.com, 801-671-4496

Hospitality: Ping Chang, 801-545-0512, wanping801@gmail.com

Librarian: Joanne Spotten, 487-9133, joanne@thecomputer.com

Equipment Contact: Jane Roos, 801-572-9997, gracey1849@yahoo.com

Grants Officers: Mimi Rodes, mimirodes@comcast.net; Susan Hainsworth (Guild Show 2015 Chair), susanhainsworth@gmail.com

Newsletter: Susan Hainsworth, 801-292-1169, susanhainsworth@gmail.com; Maureen Wilson, 801-485-5241, maureenmwilson@yahoo.com

Website: Judie Eatough, 801-375-5535, judie@eatough.net

HGA representative: Jill Dahle, 801-446-5581, pjdahle@msn.com

Guild Calendar

2014–2015

December 18, 2014

Christmas party and gift exchange, Mimi Rodes's home

**Note, this is the 3rd Thursday*

January 15, 2015

Guild Show Opening: Inspired by Fiber Art

**Note, this is the 3rd Thursday*

January 22, 2015

Swedish Weaving presentation

Joanne Hall

**Note, this date takes the place of our February meeting, so we can all learn from Joanne Hall*

January 22-24, 2015

Swedish Weaving Workshop
Joanne Hall

March 12, 2015

Sources of Inspiration for Tapestry Weaving
Mimi Rodes

April 9, 2015

Triangle Weaving (Loom and Process)
Julie Schwartz

May 14, 2015

To be announced

June 2015

Date to be announced