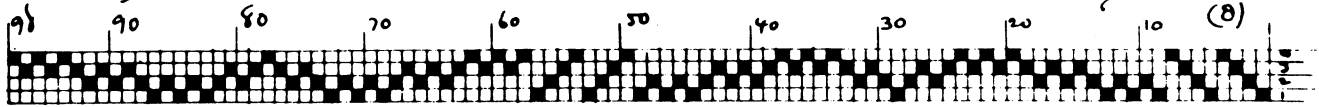


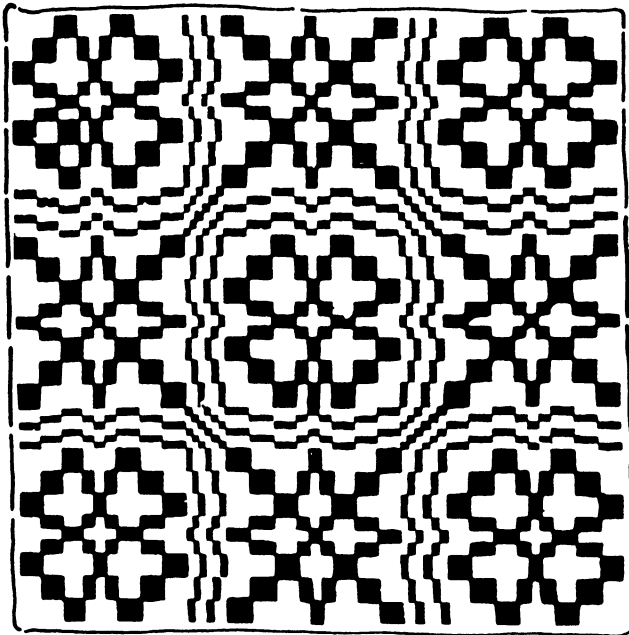


Recipe for Upholstery Fabric Pattern from the Speck Book

Draft for Overshot Weaving



Warp, fine linen — line linen #20 or similar material — set at 36 ends to the inch.
Weft Shetland yarn, strand silk, medium weight rayon, etc., etc.



Weave draft (a)

- | | |
|---------|------------|
| treadle | 1. once |
| " | 2. " |
| " | 3. " |
| " | 1. " |
| " | 2. " |
| " | 3. " |
| " | 1. 4 shots |
| " | 2. 4 " |
| " | 3. 4 " |
| " | 2. 2 " |
| " | 1. 2 " |
| " | 2. 2 " |
| " | 3. 4 " |
| " | 2. 4 " |
| " | 1. 4 " |
| " | 3. once |
| " | 2. " |
| " | 1. " |
| " | 3. " |
| " | 2. " |
| " | 1. " |

(Continue)

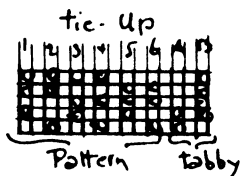
- | | |
|---------|------------|
| treadle | 3. 4 shots |
| " | 2. 4 " |
| " | 1. 4 " |
| " | 2. 2 " |
| " | 3. 2 " |
| " | 2. 2 " |
| " | 1. 4 " |
| " | 2. 4 " |
| " | 3. 4 " |

Repeat

To put this pattern on the 590 ends of a Structo warp thread as follows:

Border: 3, 4, (1, 2, 3, 4) 5 times

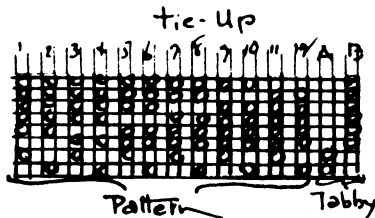
Pattern, five times	28 ends
Pattern, 1-57	57 "
Border (4, 3, 2, 1) 5 times	20 "
<hr/>	
	585 ends



Draft for Summer & Winter Weave

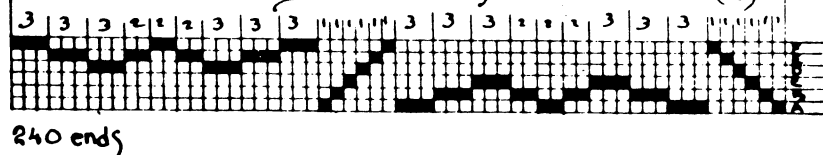


Warp: linen #2 or #14 set at 24 ends to the inch. Weft homespun, Shetland, or similar material, or Warp, spun silk, fine linen, ramie or fine cotton, at 30 ends to the inch. Weft, Fabri, spun silk, etc.. the pattern should be woven as drawn in.



An "X-Y" tie-up may be made to ten treadles

Draft for Weaving in two Colors



For notes describing the manner of weaving in two colors, see Recipe Series III No. 5