

# Weaver's Bag

---

## Woven Harmony — Rebecca Bluestone

Friday, March 5<sup>th</sup> 7:30 pm

Allred Theater, Browning Visual Arts Center, at Weber State

See the work of Rebecca Bluestone, a nationally known weaver of tapestries, and hear her speak about her work, the creative process, and the importance of art in our lives. She and her husband, Robert Bluestone, who is a classical guitarist, will be at Weber State University during the first week of March. For our March Guild meeting, we will attend a special concert that she and her husband will present on Friday, March 5, at 7:30 p.m. at the Allred Theater, Browning Visual Arts Center, at Weber State. Rebecca describes the concert as follows:

"WOVEN HARMONY is a multi-media performance by Rebecca and Robert Bluestone, incorporating Rebecca's tapestries installed onstage, projected visual images of their home, studio, process, and the landscapes and places from which they have drawn inspiration. All of this is interwoven with Robert performing his music and conversation between the two artists. Their ultimate goal is to invite the audience into their lives as artists, individuals and a couple. They believe strongly in the nonverbal communication of music and visual art. Through the use of what Rebecca calls 'contemplative repetition' and Robert's lyrical interpretations of classical music, they attempt to create a transformative space in the performance where the music and art can speak in their own language. As Jim O'Connell, director of the Performing Arts Foundation in Wausau, Wisconsin, had to say after seeing the performance: "By the time they declare a brief intermission, you find that you have been drawn gently into a web of friendship with this extraordinary couple. . . . They have engaged your eye, your ear, your mind and spirit in a way that leaves you refreshed and renewed. "

The show costs \$10.00 (student) and \$12.00 (everyone else). We can get a group rate that allows us all to pay the student price.

Then plan to meet at the theater by 7:15 to pick up your ticket. You can also show up at the door and buy a \$12.00 ticket. (The box office number is 1-801-626-8500.) We are thinking about meeting at a restaurant near the theater about 6:00 for anyone who is interested. If you want to buy a ticket at the group rate or dinner details, call Julie Schwartz at 1-435-654-0746 or e-mail her at [jdschwartz@aol.com](mailto:jdschwartz@aol.com).

---

### *President's Message:*

As of this writing I am again in good ole Michigan taking care of lawyer/trust/banking business. I have learned more than I ever wanted to know about wills/trusts/lawyers who write them and those that criticize them. Enough!

I went to what is called the "Winter Fleece Fair" for the guild I belong to in Michigan. I had not been to one before. There were twenty 12 foot round tables, stacked high with different kinds of fleece for sale. Then there were racks with finished wools that extended for 40 feet. And another area of finished "stuff"- feltings, finished garments, also books and equipment. I was on over load!

I tried two spinning wheels that are a different brand from mine. I've determined my inability with a spinning wheel has very little to do with the wheel. Spinning just may be not one of my "things". The checkbook definitely showed activity this month.

Don't forget to let me know if you want Bluestone tickets for the March meeting. Email or call me if you want them. They can be purchased at the door also.

Are you excited about the Statewide meeting? It is really looking good! There are several already on the list for the Rohde rug workshop. Let Charlene know if you're interested so you won't miss out

It is also time for election of officers for the guild. If you would like to nominate anyone for an office please let Connie Denton know so she can add them to the list. Hope this finds you excited for the programs ahead and are finishing many winter fiber projects.

*Julie*

---

**Statewide Meeting:** See Registration in last month's newsletter or on the website.  
[www.MaryMeigsAtwaterWeaversGuild.org](http://www.MaryMeigsAtwaterWeaversGuild.org)

**Karna, Mary Helen, and Michelle**

**Karna Petuskey** has been a member of the Mary Meigs Atwater Weavers Guild since 1987 and is presently busy as the Statewide Meeting Chair. Karna took her first weaving class the year before joining the guild and she started weaving in earnest when she retired from being a school librarian. People kept asking her what she wanted when she retired and she answered money for a loom. Karna still has that first loom, a Schacht Mighty Wolf. She also has a table loom and a Louet Megado which she uses all the time. It is computer controlled and has 16 shafts. Karna really likes structure but also likes to 'mess with color'. She likes twills and figuring how to change them and invent her own patterns. She prefers to use one threading and change the tie-up between pieces. Karna is currently weaving some towels for her daughter-in-law in olive green, gold and tan in a reverse waffle weave.

Other than weaving, Karna likes to play golf in the summer at least once a week (sometimes more) and she also maintains the data base for the membership of the Retired School Employees. Karna likes to read and belongs to a book club with a group from the Granite School District where she worked. Currently, she is reading a biography of a Moso woman who grew up during the Chinese Revolution. The Moso are related to the Tibetans, but their culture is very different in tradition from the Chinese and the Tibetans. *Leaving Mother Lake, A Girlhood at the Edge of the World* is a book that Karna would recommend to anyone interested in other cultures.

Karna's son (the husband of the lucky daughter-in-law) lives in Phoenix and her daughter lives in Salt Lake City. Karna hopes that one of these days her daughter may want to learn to weave since she has already taken a Navajo weaving workshop.

I spoke with **Michelle Poulin-Alfeld** just after a momentous event—her last parent teacher conference ever! Michelle and her husband have three children: one in graduate school, an undergrad at the U of U and a high school senior. Michelle is originally from California and her husband is from Germany.

Michelle joined the Mary Meigs Atwater Weavers Guild two years ago. She took a weaving class her last year in college and wonders that she was able to graduate because she wanted to weave all the time. Six months ago, Michelle was able to buy a Baby Wolf eight shaft loom from the University. She warped it, started weaving and is hooked. She likes to do tea towels, especially out of 8/2 un-mercerized cotton. At Christmastime, Michelle did a series of towels from Weaver's Craft and put them in baskets as gifts. She has done three warps with a Zephyr yarn doing blocks of warp-faced and weft-faced pattern for scarves. A friend recently lent her a large loom to do some overshot and Michelle has learned the value of sampling. She believes that it is important to not let time go by and to always have a warp on the loom.

Michelle is known as a fine knitter and has designed many patterns. She works at Black Sheep Wool Company and has easy access to wonderful yarns and ideas. Recently, Michelle got a Schacht spinning wheel and just took Jill Dahle's class at Black Sheep Wool Company. Michelle has found that her life revolves around fiber and is very happy with that situation.

**Mary Helen Binger** is a new member of the Mary Meigs Atwater Weavers Guild. She considers herself a beginning weaver with some experience as she has been interested in weaving for a long time.

In the early 1970s, Mary Helen was living in Sitka, Alaska, where there was a junior college with six disassembled rug looms in the attic of one of the college's building. After consulting with a friend who was a weaver, and getting permission to take them, Mary Helen found someone to carry them down from the attic and without knowing what they should look like when assembled, got enough pieces for 2 looms, borrowed a car, loaded the loom pieces, took them to a dock, loaded them onto a boat, crossed the channel to where she lived, unloaded the pieces from the boat, carried them up the ramp and into another borrowed car, (which belonged to her weaver friend) and finally to her house. Mary Helen figured out how to get one loom put together from the pieces—the loom had a rough hewn beam with string heddles—and then moved it to New Jersey, set it up one more time and started looking for a weaving teacher. Mary Helen never got it warped for a variety of reasons: a baby came along and another move...the loom was eventually left in an attic and lost in a divorce.

The next time Mary Helen had an opportunity to weave was when she was working in Switzerland. She went skiing in Flims, Switzerland, and by accident the place she stayed was the home of a weaver who had several looms. Seeing her interest, the weaver offered a webfeieren—a weaving holiday. Mary Helen went back to Flims in the spring loaded with weft from her knitter's

### 3 Weaver's Bag

stash. The weaver had a loom warped with white cotton or linen and charged Mary Helen by the meter of warp used. She left Mary Helen to weave after bringing her breakfast in the morning. Mary Helen was obsessed and wove till everything ached, then she would get up to walk in the Alps and come back to weave more. Mary Helen wove placemats, a little bag, pillow covers...as much as she could in four days..."it was magical". She also got her first taste of spinning in Flims after coming across some soft, bright blue fluff which the weaver showed her how to spin.

About ten years later, Mary Helen got her next taste of weaving by taking a workshop in a northern suburb of Chicago. A week after signing up for the class, she mentioned to her local yarn shop owner that she was interested in weaving and the woman told her that she had a four harness loom for sale. Mary Helen said she'd take it, asked how much and what kind of loom it was---in that order....it was a 48 inch Norwood with four shafts. Mary Helen had done about ten warps on the loom before joining the guild.....she is looking forward to learning more and weaving many more warps. Mary Helen feels that weaving is an effort to grow her right brain after working as a scientist for most of her life...fabric and fiber call to her and seem almost as a spiritual journey.

Mary Helen has been spinning for about a year, knitting for a long time and has experimented with some quilting.

**Guild Project – *The Recipe Book*** The Mary Meigs Atwater *Recipe Book*. We hope to have the drafts and CD finished for Convergence 2004 in Denver. March 27<sup>th</sup>, April 24<sup>th</sup>, 10am – Noon. BYU, B-77, Room M213, enter by east door, about 1350 North Canyon Road. Playground equipment is in front of building. See the map on web page:

[www.MaryMeigsAtwaterWeaversGuild.org](http://www.MaryMeigsAtwaterWeaversGuild.org)

**DUES.** To join the Weavers Guild, send \$30 to Treasurer: Charlene Lind, 2974 N 320 E, Provo, UT 84604, [clind@juno.com](mailto:clind@juno.com)

---

**For sale: Gently used Glimakra loom. 8 H, 10 T, Countermarche, 45 inch weaving width. Warped, and can be test driven. Contact Heidi Smith, 435-649-3856 or [3smiths@xmission.com](mailto:3smiths@xmission.com) \$1,500 includes all accessories and documentation. Thank you. Heidi Smith**

---

### Rebecca Bluestone Exhibit

Rebecca's tapestries will hang for some time in the Shaw Gallery in the Kimball Arts Building at Weber State, and there will be a formal opening of the show on Wednesday, March 3, from 7:00 to 9:00 p.m. if you are interested in attending. Rebecca and her husband will be

March 2004

there. All of the tapestries in the show will be moved to the stage for the concert.

A number of our Guild members heard Rebecca speak at IWC last summer and were very impressed with her beautiful work and her ability to inspire everyone to develop and strengthen their artistic abilities and make room for artistic expression in their lives. We hope that all of you can take advantage of this wonderful opportunity!

<http://dova.weber.edu/gallery/calendar/calendar.htm>

---

**Guild Library.** Susan Hainsworth's home. 801-292-1169, [shainsworth@networld.com](mailto:shainsworth@networld.com) Susan is willing to bring books to guild meeting. Partial list on web page.

**Guild Looms and equipment.** Please contact Connie Denton if you would like to rent a guild loom or other equipment. 801-943-4717, [cdenton222@aol.com](mailto:cdenton222@aol.com) A complete list of the guild's rentable equipment will be available soon.

**Ads:** See the web page for ads. If you would like an ad or link on the web page, contact Judie Eatough, [judie@eatough.net](mailto:judie@eatough.net).

---

## Weavers...

...don't forget that our guild show for March of 2005 is at Red Butte Garden and will reflect the guild challenge of using cellulose fiber—cotton, linen and soy. Red Butte is planning a correlating display of the plants that created the fibers we used in our show. Wouldn't it be wonderful if everyone had a piece in the show!!

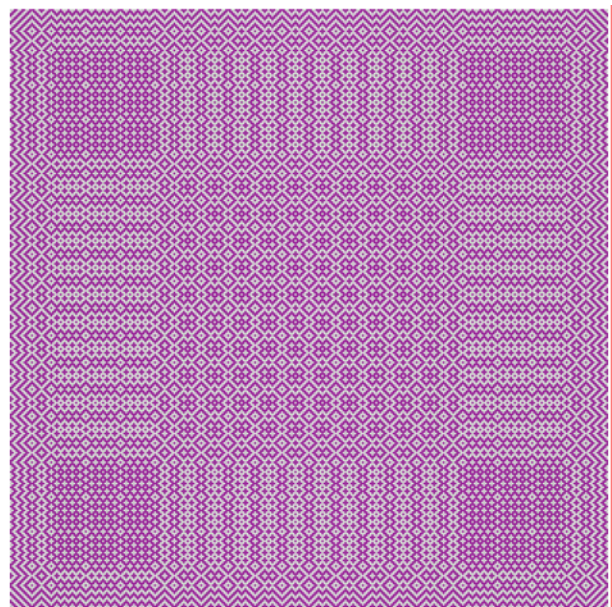
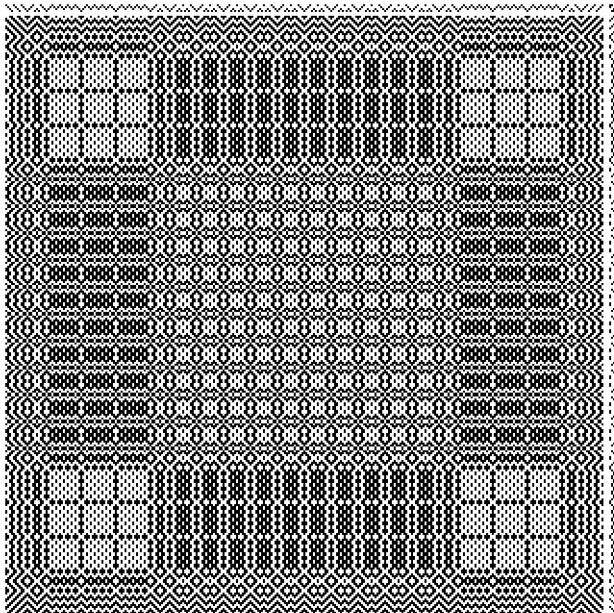
Charlene Lind presented a program about overshot. Lee's Surrender is a fun draft. She explained many methods of weaving overshot.



<b>Mary Meigs Atwater Weavers Guild Calendar:</b>	<b>13 May 2004</b> TBD
<b>5 March 2004</b> 7:30 pm Allred Theater, Browning Visual Arts Center, Weber State University	<b>June 2004</b> Saturday (12 or 19), Kathy's meadow Meeting/program: Judie Eatough: Card Weaving
<b>23-24 April 2004</b> Statewide meeting <b>Unitarian Church</b> 6876 South Highland Drive, (20th E), <b>25-27 April 2004</b> Workshop Michael Rhode will be the keynote speaker and workshop leader for the statewide meeting. <a href="http://www.michaelrohde.com/index.html">http://www.michaelrohde.com/index.html</a>	<b>27 June - July 3 2004</b> Convergence in Denver We're planning a get-together in Denver. <b>TBD August 2004</b> Basket weaving at Julie's
	<b>September 2004</b> With sheep dog trials. A 1-day workshop is being planned.

<b>2003 – 2004 Board</b>	
President: Julie Schwartz 435-654-0746 jdschwartz@aol.com Vice-President: Connie Denton 801-943-4717 CDenton222@aol.com Secretary: Diane Haueter 435-654-1486 801-582-0271, utweaver@comcast.net Treasurer: Charlene Lind 84604,801-375-7532, cllind@juno.com 2974 N 320 E, Provo, UT Grants: Heidi Smith 435-649-3856, 3smiths@xmission.com Grants: Patti Pitts	<b>Committee chairs:</b> Hospitality: Patti Pitts, 801-582-0271, utweaver@comcast.net Library: Susan Hainsworth, 292-1169, Shainsworth@networld.com Equipment: Connie Denton 943-4717, CDenton222@aol.com 2004 Statewide Meeting Chair: Karna Petuskey 2005 Guild Show Chair: Teri Jo Mauch Principle Agent: ReNeé Page 942-6548 Newsletter: Judie Eatough 801-375-5535, judie@eatough.net 1252 N Uinta Dr, Provo 8464-2905
<b>Guild Webpage</b> <a href="http://www.MaryMeigsAtwaterWeaversGuild.org">www.MaryMeigsAtwaterWeaversGuild.org</a>	<b>To Join Guild Email List:</b> Send an email to MMAWG-subscribe@yahoo.com

## Series V, No. 14: Recipe for a Linen Lunch-Cloth —A Swedish “Bird-Eye” Pattern.



The threading for this draft is a point twill. Cloth is woven with a fine tabby, a two shuttle weave. The second version is woven-as-draw-in with a 2/2 twill tie-up, a one shuttle weave. One threading — two very different fabrics.