



Weaver's Bag

Mary Meigs Atwater Weavers Guild

November 2004

Snowflake Twills — Judie Eatough

November 11th 2004 — 7:00 pm

Pioneer Craft House 500 East 3300 South, SLC

Mary Atwater included a draft for a snowflake twill in the August 1945 Shuttle-Craft Guild Bulletin. The threading/treadling was awkward and difficult to remember, but the design was spectacular. With computers and delving into old drafts and rearranging the shafts, an easier version of this draft led many people to pursue this twill design technique. *Advancing twill* is the starting point for this design technique. Other twill threadings are added to an advancing twill draft to produce snowflakes and frost crystals.

Guild Workshops:

Woven Shibori Workshop - The first dye session will be Friday, Nov 19th, 6 pm at Patti Pitts home. Wear old clothes and/or an apron, bring gloves for dyeing, and a plastic bag to transport your dyed sample back home. The sample information has been mailed out, please contact Barbara Cabrol at sbcabrol@earthlink.net, or the new phone number (801) 544-8748 with any questions you probably have as it was written during the commotion of our move. We will meet briefly at the Nov 11 guild meeting to review progress and plan for the premixed dyes.

Recipe Book and Structure: December 11th: More twills. January 29th: Lace. 10 am to Noon, Meetings will be in M213, B-77, BYU, Provo UT, about 1400 N University Ave. Contact Judie Eatough 375-5535, judie@eatough.net

Local Galleries with fiber arts:

Utah Artist Hands, 61 West 100 South, Salt Lake City, 801-355-0206, www.utahhands.com/contact/index.htm

Local Colors Artworks- Trolley Square, 602 E. 500 S, 531-6966.

Finch Lane Gallery - 54 Finch Lane, 596-5000

Favorite Galleries to Visit:

Isabella Stewart Gardner Museum, 280 The Fenway, Boston MA. – Karna Petuskey

Display/Sales Opportunities Coming

Make sure you start your weaving projects now as we have several places you will be able to display your goods and also sell. Pioneer craft house will be ongoing and our show next spring is a show and sale. Also there is IWC in Durango in July. We'll keep you posted on more as information becomes available.

Weavers...don't forget that our **guild show** for March of 2005 is at Red Butte Garden and will reflect the guild challenge of using cellulose fiber—cotton, linen and soy. Also any other plant related material, such as pine needles and other basket materials. Red Butte is planning a correlating display of the plants that created the fibers we used in our show. We will need to know in February what you are exhibiting and have the items by 5 March. Items may also be sold at this show - 35% commission. Wouldn't it be wonderful if everyone had a piece in the show!!

DUES. To join/renew the Weavers Guild, send \$30 to Treasurer: Charlene Lind, 2974 N 320 E, Provo, UT 84604, clind@juno.com Dues are payable each year in September-October. The mailing label should indicate 2005 if you have paid dues for the year.

Guild Looms and equipment. Please contact Sara Lee Neill if you would like to rent a guild loom or other equipment. Phone: 801-829-3703, Email: sleNeill@xmission.com A complete list of the guild's rentable equipment will be available soon.

Guild Library. Susan Hainsworth 801-292-1169, shainsworth@networld.com The library will be open during guild meetings at Pioneer Craft House this year. See list of books on page 3-4.

Ads: See the web page for ads. If you would like an ad or link on the web page, contact Judie Eatough, judie@eatough.net.

Interweave Press Guild subscription Promotion: Forms will be at the October and November guild meetings. Beadwork, Fiberarts, Handwoven, Interweave Knits, Piecework, and Spin Off: \$21.95/year each.

Phone list deleted. If you are a member of the guild, please email judie@eatough.net for a pdf copy sent by email. Guild members only.

Mary Meigs Atwater Weavers Guild Calendar		
Thursday 11 November 2004 Snowflake Twills by Judie Eatough	PCH	March 2005 Workshop (TBA)
Thursday 9 December 2004 hosted by Teri Jo Mauch		Thursday 14 April 2005 Woven Metal by Judie Eatough
Thursday 13 January 2005 Handpainted Warps by Deanna Baugh	PCH	Thursday 12 May 2005 Abecedarian Weaving by Patti Pitts
Thursday 10 February 2005 Small Books by Diane Haueter and Patti Pitts	PCH	Saturday 11 June 2005 Picnic at Kathy's Meadow Small Basket by Connie Denton
March 2005 Guild Show	Red Butte Garden Entries due 5 March	July 28 – 31 IWC at Durango, CO http://www.intermountainweavers.org/
2003 – 2004 Board		
President: Julie Schwartz 435-654-0746 jdschwartz@aol.com Vice-President: Patti Pitts 801-582-0271, utweaver@comcast.net Secretary: Diane Haueter, 435-654-1486 Treasurer: Charlene Lind, 801-375-7532 2974 N 320 E, Provo, 84604, clind@juno.com Grants: Teri Jo Mauch Grants: Deanna Baugh		Committee chairs: Hospitality: Connie Denton 943-4717, CDenton222@aol.com Library: Susan Hainsworth, 292-1169, Shainsworth@networld.com Equipment: Sara Lee Neill, slneill@xmission.com Guild Show: Patti Pitts Principle Agent: ReNeé Page 942-6548 Newsletter: Judie Eatough 801-375-5535, judie@eatough.net 1252 N Uinta Dr, Provo 8464-2905
Guild Webpage www.MaryMeigsAtwaterWeaversGuild.org		To Join Guild Email List: Send an email to MMAWG-subscribe@yahoogroups.com

Partial List of books in the Library

MARY MEIGS ATWATER WEAVERS GUILD LIBRARY LIST			
	Author	Title	ISBN#
	Albers, Anni	Anni Albers: On Weaving	LC#65-19855
	Alderman, Sharon	Mastering Weave Structure	1-931499-32-2
B-5	Allen, Elsie	Pomo Basketmaking; a Supreme Art for the Weaver	
	Atwater, Mary Meigs	Tabby Weave-Series of Fireside Talks	Monograph
	Atwater, Mary Meigs	Byways in Handweaving	0-916658-47-3
	Atwater, Mary Meigs	American Hand-weaving	0-916658-43-0
	Atwater, Mary Meigs	ShuttleCraft Guild Bulletins 1947,1948,1949 V.III	Monograph
	Atwater, Mary Meigs	ShuttleCraft Bulletins for 1935-1938	Monograph
	Atwater, Mary Meigs	Mary Meigs Atwater Recipe Book	0-93751-01-4
	Atwater, Mary Meigs	Mary Meigs Atwater Recipe Book	0-93751-01-4
	Atwater, Mary Meigs	Mary Meigs Atwater Recipe Book	0-93751-01-4
M-5	Ball, W. W. Rouse	Fun with String Figures	
	Barrett, Clotilde	Shadow Weave and Corkscrew Weave	LC#55945
	Beard, Betty J	Fashions from the Loom	0-934026-03-3
	Best of Weaver's	Huck Lace	1-893762-01-7
	Best of Weaver's	Fabrics That go Bump	1-893762-11-4
	Best of Weaver's	Thick 'n Thin	1-893762-08-4
	Best, Eleanor, ed.	Motifs for Weaving:Knitting, Needlework, &	

MARY MEIGS ATWATER WEAVERS GUILD LIBRARY LIST

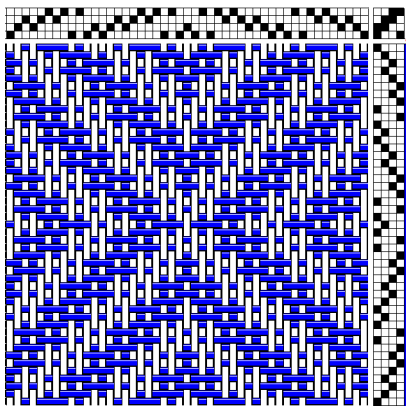
	Author	Title	ISBN#
		Graphed Designs	
	Beveridge, Jane H	Warp/Weft/Sett Reference Manual for Handweavers	0-442-26129-2
	Beyer, Jinny	Christmas with Jinny Beyer	0-87596-716-7
	Black, Mary E	Sett and Weaving of Tartans, The	Monograph
	Bress, Helene	Weaving Book, The; Patterns & Ideas	0-684-15664-4
	Brostoff, Laya	Professional Handweaving on the Fly Shuttle Loom	0-442-20948-7
	Burnham & Burnham	Keep Me Warm One Night 1979	0-8020-1896-3
	Collingwood, Peter	Maker's Hand	0-937274-26-7
	Constantine, M/Jack Larsen	Beyond Craft: the Art Fabric	0-442-21634-3
M-3	Crause, Gloria E.	Hooking Rugs: New Materials, New Techniques	
	Creage, Clara	Weaving, a Creative Approach for Brinnners	0-385-02901-2
	Creager, Clara	Weaving; a Creative Approach for Beginners	0-385-02901-2
	Emery, Irene	Primary Structures of Fabrics	LC# 65-19743
	Everett, Edward F	Foot Power Loom Weaving , 1918	
B-7	Exhibition Catalog of Utah Museum.of Natural History	Indian Basket Designs of the Greater Southwest	
	Forlag, LTs	Vava MedHemslojden 1- Swedish	91-36-00680-7
	Forlag, LTs	Vava Med Hemdujden 2- Swedish	91-36-00680-7
	Gonsalves, Alyson Smith	Weaving Techniques and Projects	LC#74-89580
B-3	Harvey, Virginia I.	Techniques of Basketry	
	Holroyd, R. N.&Ulrik L. Beck	Jacob Angststadt Designs	LC#76-9402
	Holroyd, Ruth N.	Jacob Angststadt; his Weavers Patron Book	LC#76-9402
	House, Florence E.	Notes on Weaving Techniques, May 1949	
M-1	Howard, Constance	Inspiration for Embroidery	
	Kadolph,Langford, Adler,Saddler	Textiles	0-02-361601-6
	Kent, Kate Peck	Prehistoric Textiles of the Southwest (signed copy)	0-8263-0591-1
B-6	Kroncke, Pete	Weaving with Cane and Reed	
	Mattera, Jean	Rugweaving, Techniques for two harness 1070	0-8230-4615-x
B-9	Meilach, Dana Z.	Modern Approach to Basketry with Fibers & Grasses: Using Coiling, Turning, Weaving, Macrame, Crocheting	
M-2	Meilach, Dana Z. & Lee Eilin Snow	Creative Stitchery	
B-4	Navajo School of Indian Basketry	Indian Basket Weaving	
	Pendleton, Mary	Navajo and Hopi Weaving Techniques	0-02-595500-4
	Piroch, Sigrid	Magic of Handweaving: the basics and Beyond	0-87349-384-2
	Piroch, Sigrid Sample	Design Challenges—E. W. Hickman (signed copy)	0-9630006-0-8
	Plath, Iona	Craft of Hand Weaving, The	684-12742-3
	Reiter, Mary Jo, comp.	Weaving a Life: The Story of Mary Meigs Atwater	0-934026-77-7
B-1	Rosbach, Ed	Baskets as Textile Art	
	Ryall, Pierre	Weaving Techniques for the Multiple Harness Loom	0-442-27086-2
	Ryall, Pierre	Weaving Techniques for the Multiple Harness Loom	0-442-27086-2
	Searles, Nancy M	Technique of Freeform Design, The	0-9613894-0-0
	Selander, Malin	Swedish Swatches	
B-2	Siler, Lyn	Basket Book, The; Over 30 Magnificent baskets to make & enjoy	
B-8	Siler, Lyn	Handmade Baskets:28 Beautiful Baskets to Make for your Home	
	Snyder, Mary E.	Lace and Lacey Weaves (signed copy)	Monograph
	Tamosaitiene, Anastazija & Tamosaitis, Antanas	Lithuanian Sashes 1988	0-9191187-04-8
	Tidball, Harriet	Weaver's Book 1974	LC#60-13222

MARY MEIGS ATWATER WEAVERS GUILD LIBRARY LIST

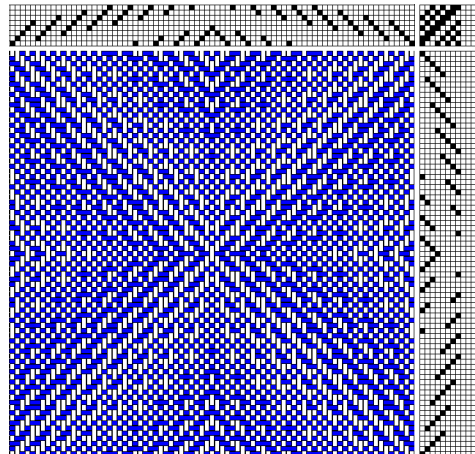
	Author	Title	ISBN#
	Tidball, Harriet	Woolens and Tweeds-1961	Monograph 4
	Utah Museum of Fine Arts,U of U 1976	Patterns & sources of Navajo Weaving	Monograph
	West, Virginia	Designer Diagonals Portfolio of Patterns for Bias Clothing	Monograph
	West, Virginia	Cut Above, A; Couture Clothing for Fibre Artists	Monograph
	Wilson, Jean	Pile Weaves, The (signed copy)	0-442-29519-7
M-4	Zarbock, Barbara J.	Complete Book of Rug Hooking	

Advancing twills

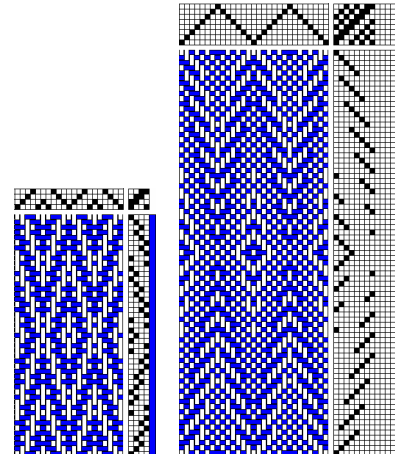
4-shaft



8-shaft



Point Twills



Some of the parts for Snowflake twills. Take an advancing twill and add one or more of the following to the draft, then weave-as-drawn-in for one version of the draft. Twills to add: straight, broken, point, M's and W's, satins, etc. Come see how the pieces fit together at guild meeting.