



# Weaver's Bag

Mary Meigs Atwater Weavers Guild

October 2004

## From Fabric to Fashion— Barbara Cabrol

7:00 pm Pioneer Craft House 500 East 3300 South, SLC

Now that your handwoven fabric is off the loom and finished, where to start? Not all fabrics or garments require the same construction techniques, options abound, but some basics are important. We'll be sharing ideas and tips to help with the "what-if's" and "should have's" on the way to creating a successful garment. Please add to the evening by wearing, or bringing, your handwoven garments for an on-going informal fashion show.

### *President's Message.*

It was so good to see all of you at the September meeting and at BOW. There were neat things shared and I look forward to seeing more of each of your projects.

I really liked the BOW venue this year. The dogs were fascinating and wonderfully trained. I took a drop spindle class and had success (as opposed to my spinning wheel tries). I was beaming when I returned to the demo/sheep to shawl tent. Patti emphasized to me that I was to do 20 minutes a day of practice. I haven't managed that but am trying and I can see improvements. Remember to let Heidi know what you liked and didn't and what you want to help with next year.

Boy do we have a schedule for you this year. It has quite the variety of programs. We think we have a little something for all of you and hopefully programs will interest others from other guilds. Our spring show/workshop is developing and is all related to cellulose fiber. We also decided to have an exchange (4 per group) with several choices to choose from – tea towels, tencel scarves, etc. with the sharing at next September's meeting. There is more information later in the newsletter. We are also going to have a progressive class (woven shibori) that will last for 4 or 5 months where you work on directions you are given for the month. The study group has started with working on computers and weaving (I missed the first one – Judie can I have a makeup class????)

Enough babble. I'm sure you want to get to some specifics. See you at Pioneer Craft House for the October meeting.

*Julie*

New meeting place: We will be meeting at Pioneer Craft House (500 E 3300 S.) starting with the October 14 meeting.

### **Display/Sales Opportunities Coming**

Make sure you start your weaving projects now as we have several places you will be able to display your goods and also sell. Pioneer craft house will be ongoing and our show next spring is a show and sale. Also there is IWC in Durango in July. We'll keep you posted on more as information becomes available.

**Pioneer Craft House:** All items will need to be submitted for jury. The jury process should be prepared for as you weave your items. You will need to include contents and care instructions. All items will need to be finished and ready to use. One member of the guild will serve on the jury committee. Details are coming.



Weavers...don't forget that our guild show for March of 2005 is at Red Butte Garden and will reflect the guild challenge of using cellulose fiber—cotton, linen and soy. Also any other plant related material, such as pine needles and other basket materials. Red Butte is planning a correlating display of the plants that created the fibers we used in our show. We will need to know in February what you are exhibiting and have the items by 5 March. Items may also be sold at this show - 35% commission. Wouldn't it be wonderful if everyone had a piece in the show!!



**DUES.** To join/renew the Weavers Guild, send \$30 to Treasurer: Charlene Lind, 2974 N 320 E, Provo, UT 84604, [clind@juno.com](mailto:clind@juno.com) Dues are payable each year in September-October. The mailing label should indicate 2005 if you have paid dues for the year.

**Guild Looms and equipment.** Please contact Sara Lee Neill if you would like to rent a guild loom or other equipment. Phone: 801-829-3703, Email: [sneill@xmission.com](mailto:sneill@xmission.com) A complete list of the guild's rentable equipment will be available soon.

**Guild Library.** Susan Hainsworth 801-292-1169, [shainsworth@networld.com](mailto:shainsworth@networld.com) The library will be open during guild meetings at Pioneer Craft House this fall.

**Ads:** See the web page for ads. If you would like an ad or link on the web page, contact Judie Eatough, [judie@eatough.net](mailto:judie@eatough.net).

**Recipe Book Study Group**

The CD is finished, now we will explore Mary Atwater's Legacy. Short meeting at the October Guild meeting to decide on meeting dates details. We will be studying the structures in the *Recipe Book* and use of computer software. We will use the guild yahoo site to exchange drafts between meetings. First assignment will be plain weave. Meetings will be in B-77, BYU, Provo UT, about 1400 N University Ave. - Contact Judie Eatough We will decide on topics/dates for the years study at the workshop.

**Woven shibori workshop.** This will be an on-going workshop meeting about once a month, probably on the first Friday evening of Dec, Jan, and Feb. We'll start with a short meeting at the Nov 11 guild meeting for a quick overview of the process and to distribute handouts with various fiber and threading

*Plain Weave*: the basic weave structure, is a good place to start. This will help you learn to use your drafting program or graph paper. There are five items you can change when you design a textile: structure, yarn, color, sett/beat, and surface design. **1. Structure:** Plain Weave. **2. Yarn:** Imagine different fibers and sizes for the yarn, perhaps the yarn is bumpy or smooth, silk or wool, or even a blend. **3. Color:** once you pick a yarn, it can be dyed/produced in different colors, even space-dyed. **4. Sett/Beat:** Both can be constant or vary. Yarn may be sett close and beat hard for a firm fabric or be sett open and beat softly for a more open fabric. **5. Surface Design:** Not included in this workshop. The shibori workshop covers at least one type of surface design.

Series VII-12d



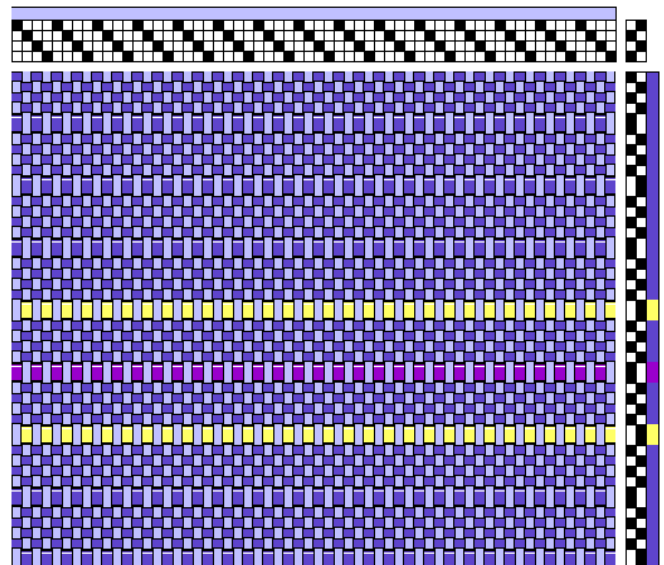
options. Participants will weave their samples at home and we'll do the dyeing together at Patti Pitts home. Due to the nature of the process it's going to be experimental and lots of fun. Final details will be available in next month's newsletter.

Budget report 2003-04

Income:	
Dues .....	\$1270
Equip. rent .....	225
Sale of CD .....	350
Grants, interest .....	1024
Workshops/statewide .....	3750
Expenses:	
Regular meetings.....	895
Newsletter .....	353
Library .....	528
Produce CD .....	595
Guild Show .....	375
Officers & Misc.....	210
Statewide /workshops .....	3791

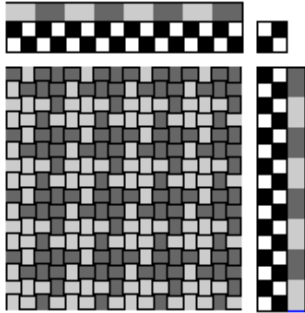
Charlene requests that all officers and guild members who have bills from activities for this summer that have not be submitted for payment, please do so by the Oct meeting. That includes the materials for Pioneer Craft

Interweave Press Guild subscription Promotion: Forms will be at the October and November guild meetings. Beadwork, Fiberarts, Handwoven, Interweave Knits, Piecework, and Spin Off: \$21.95/year each.

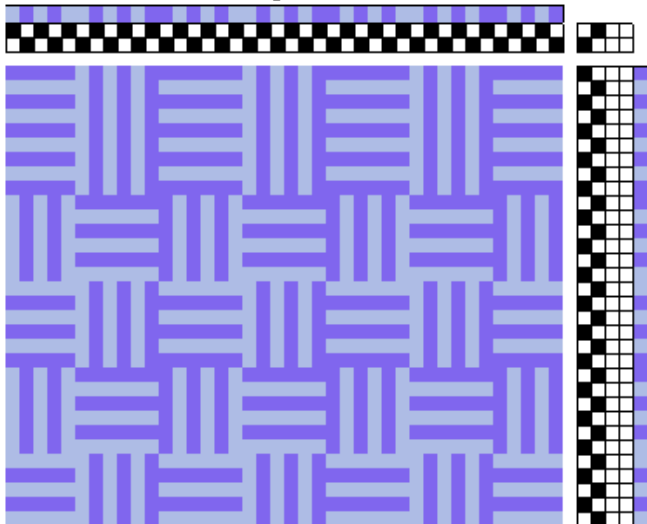


How can you show these choices in your drafting? The draft above shows different yarns used in the weft. Thickness and color are used to highlight the different yarns. Not all programs have a setting for thickness.

The next two examples are a simple color and weave pattern—2 dark, 2 light. Series VII-12b →  
The second draft is for the same structure, the draft is done in interlacement mode. Series IV-9a



This draft is another color and weave effect. It has pin checks and hairline stripes. Series VII-12a →



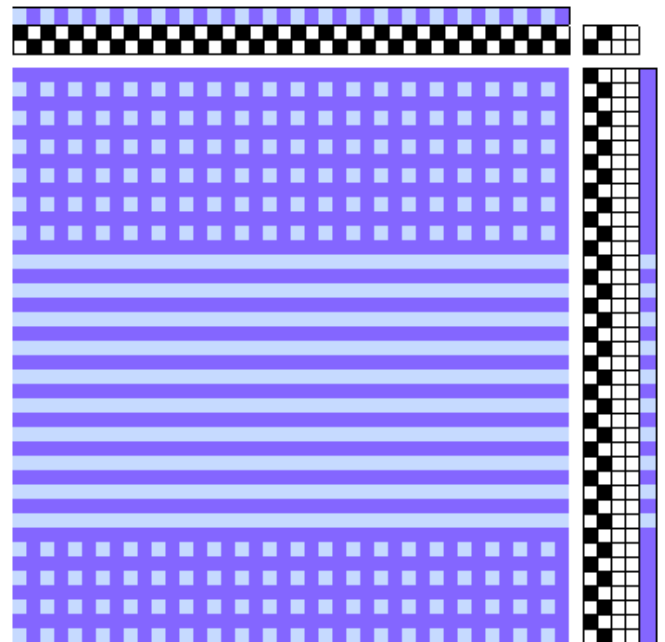
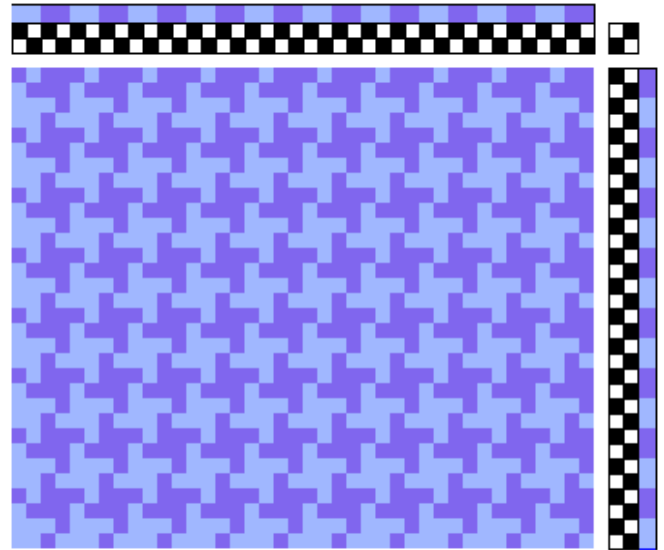
Above: Series VII-12c Log Cabin  
Here is another color pattern that has a name of it's own- log cabin.

Served at guild meeting on 13 November 2003.

**Pumpkin Surprise**

Combine and pour in pan (9 x 12 or 13):  
3 cups pumpkin  
1 cup sugar (or 2 cups if you would like it sweeter)  
6 eggs

Cut 1/4 cup butter into yellow cake mix.  
Crumble over pumpkin mix.  
Bake 1 hour at 350°, serve with whipped cream.  
Can be made the day before and reheated at 200°.  
Diane Haueter



2 Tblsp pumpkin pie spice (or 2 tsp cinnamon, 1 tsp ginger, 1 tsp nutmeg, 1/2 tsp cloves)  
1 cup milk  
1 cup evaporated milk

<b>Mary Meigs Atwater Weavers Guild Calendar</b>		
Thursday 14 October 2004 Sewing Handwovens by Barbara Cabrol	PCH	March 2005 Workshop (TBA)
Thursday 11 November 2004 Snowflake Twills by Judie Eatough	PCH	Thursday 14 April 2005 Woven Metal by Judie Eatough
Thursday 9 December 2004 hosted by Teri Jo Mauch		Thursday 12 May 2005 Abecedarian Weaving by Patti Pitts
Thursday 13 January 2005 Handpainted Warps by Deanna Baugh	PCH	Saturday 11 June 2005 Picnic at Kathy's Meadow Small Basket by Connie Denton
Thursday 10 February 2005 Small Books by Diane Haueter and Patti Pitts	PCH	
March 2005 Guild Show	Red Butte Garden Entries due 5 March	July 28 – 31 IWC at Durango, CO <a href="http://www.intermountainweavers.org/">http://www.intermountainweavers.org/</a>
<b>2003 – 2004 Board</b>		
President: Julie Schwartz 435-654-0746 <a href="mailto:jdschwartz@aol.com">jdschwartz@aol.com</a> Vice-President: Patti Pitts 801-582-0271, <a href="mailto:utweaver@comcast.net">utweaver@comcast.net</a> Secretary: Diane Haueter, 435-654-1486 Treasurer: Charlene Lind, 801-375-7532 2974 N 320 E, Provo, 84604, , <a href="mailto:cclind@juno.com">cclind@juno.com</a> Grants: Teri Jo Mauch Grants: Deanna Baugh		<b>Committee chairs:</b> Hospitality: Connie Denton 943-4717, <a href="mailto:CDenton222@aol.com">CDenton222@aol.com</a> Library: Susan Hainsworth, 292-1169, <a href="mailto:Shainsworth@networld.com">Shainsworth@networld.com</a> Equipment: Sara Lee Neill, <a href="mailto:slneill@xmission.com">slneill@xmission.com</a> Guild Show: Patti Pitts Principle Agent: ReNée Page 942-6548 Newsletter: Judie Eatough 801-375-5535, <a href="mailto:judie@eatough.net">judie@eatough.net</a> 1252 N Uinta Dr, Provo 8464-2905
<b>Guild Webpage</b> <a href="http://www.MaryMeigsAtwaterWeaversGuild.org">www.MaryMeigsAtwaterWeaversGuild.org</a>		<b>To Join Guild Email List:</b> Send an email to <a href="mailto:MMAWG-subscribe@yahoogroups.com">MMAWG-subscribe@yahoogroups.com</a>

Weave Design: [www.pikespeakweavers.org/WeaveDesignIntro.html](http://www.pikespeakweavers.org/WeaveDesignIntro.html)

WinWeave: <http://mywebpage.netscape.com/bdkeister/winweave.html>;

Woven Paper Hearts: <http://permo.homepage.dk/xmsheart.htm>

Woven Paper Hearts: [www.haabet.dk/users/julehjerter/making.html](http://www.haabet.dk/users/julehjerter/making.html)

Towels: [www.freenet.edmonton.ab.ca/weavers/towelex.html](http://www.freenet.edmonton.ab.ca/weavers/towelex.html)

Articles: <http://anwg.org/resources/articles/index.html>; Narrow wares: [www.weavershand.com/](http://www.weavershand.com/)

HGA: [www.weavespindye.org](http://www.weavespindye.org); Double Weave: [www.haven.com/proc/index.html](http://www.haven.com/proc/index.html)

Digital Books and samples: [www.cs.arizona.edu/patterns/weaving/monographs.html](http://www.cs.arizona.edu/patterns/weaving/monographs.html)

Instructions for narrow wares: [www.stringpage.com](http://www.stringpage.com); Kumihimo project: [www.qvade.dk/palette/Swap4.htm](http://www.qvade.dk/palette/Swap4.htm)

Card Weaving and Ply Split Braiding: [www.lindahendrickson.com/](http://www.lindahendrickson.com/)

Handwoven Magazine articles: [www.interweave.com/weave/](http://www.interweave.com/weave/); Drafts as Wif files: <http://handweaving.net>

**New Locations: Black Sheep Wool Co.:** new address is 430 East South Temple in Backer's Square. It is directly above Alpine Art and Frame and The Bride Shop. Phone number is the same, 487-9378. The new location gives the store 50% more space, a separate classroom, and lots of off-street parking to the east of Backer's Bakery.

**J. Fagen:** State Street and Broadway (3<sup>rd</sup> South) in the Broadway Center, Salt Lake City 328-4342