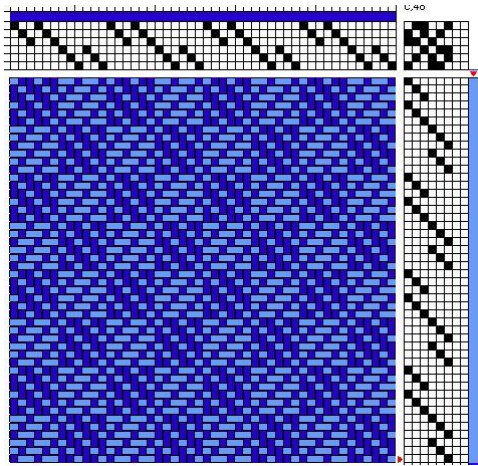


Shuttle-Craft Bulletins: Weaving Blankets

In May 1931 and February 1936, Mary Meigs Atwater wrote articles on weaving blankets. She defined blankets as all wool pieces intended for warmth and comfort rather than for the adornment of a bed such as coverlets. She included recommendations in the bulletins for yarns and weaving drafts.

For weave structures, Mary listed several as good ones for blankets, stating that any structure that produces a closely combined fabric is suitable, such as all the linen weaves, summer and winter and crackle. Other weave structures listed were goose-eye, woven without a tabby, with the warp and weft yarns in 2 different colors to bring out the design; plain twill, 3/1 twill and what she called the double twill, a draft that requires 6 shafts, shown here.



Another one was the Ms and Os weave structure. There is a baby blanket draft available in the Interweave collection (Web link <https://www.interweave.com/store/baby-blankets-in-ms-and-os>). As well as the Bronson weave, those listed in the Recipe book, Series VI., and double weave. I find this last one to be one to explore in the beautiful Welsh Wool blankets woven in double weave. These are called Welsh Tapestry blankets, and are available from online sources, such as <https://melintregwynt.co.uk/>. See the stack pictured below.

Several weaving drafts are provided in both the 1931 and 1936 issues. The Recipe Book, Series VI, contains 7 recipes for blankets with drafts and

suggested yarns, including a beautiful one in crackle weave (see Series VI, No. 12).

Some of the wool and cotton yarns that Mary recommended for weaving blankets are listed below, with possible present day substitutions. A good reference for details on these discontinued yarns is the *Chart of thread sizes and textures and their proper setting, prepared by Mary N. (sic) Atwater and Osma Gallinger*, found at <https://www2.cs.arizona.edu/patterns/weaving/monographs.html>. Compare this with the *Interweave Master Yarn Chart* for modern materials, found at <https://www.interweave.com/wp-content/uploads/Master-Yarn-Chart-2014.pdf> or the *knitting gauges, weaving setts and other properties of our yarns* on the Colourmart web site: https://colourmart.com/about/knitting_properties.



Blanket yarns recommended in the Shuttlecraft Bulletins and possible substitutes from materials available now.

Yarn	Yards/pound	Recommended sett(s)	Possible substitution
Bernat Fabri	4800	20, 24 epi	Jaggerspun superfine merino 18/2 from Halcyon and others.
Bernat Afghan	7000	36 epi	28/2 wool, Possibly Colourmart
Bernat Homespun	2200	16 epi	Jaggerspun merino 8/2 wool or Harrisville Shetland from Halcyon and others.
Fine handspun Single		30 epi	Same
Germantown Knitting yarn	1200	8, 10, 12, 15 epi	Sportweight or worsted weight knitting yarn, several brands.
3/2 cotton	1350	20 epi	Same, gives a firm fabric

Mary briefly addressed finishing of wool blankets by brushing, and has some information in the Recipe book projects. She announced the Recipe Book as ready to send out to subscribers in the 1931 Bulletin. It was mailed out in sections and the recipes were based on unusually successful actual weavings. Guild members were invited to contribute project drafts and details. The Guild has the most recent version available, if you don't have it.